

Madison Survey

and
ALUMNI NEWS



VOL. 97 NO.3

JULY—SEPTEMBER 2006

THE REST OF THE STORY, SALE OF TENNESSEE CHRISTIAN MEDICAL CENTER

By Albert Dittes

The sale of Tennessee Christian Medical Center to TriStar Health System, a subsidiary of Hospital Corporation of America (HCA), for a reported \$19.7 million has taken place, bringing to a close a medical missionary ministry started in 1908.

TriStar had surrounded TCMC with its nine hospitals in Middle Tennessee, including one a short distance away. "All of you know that the key factor in the Adventist Health System offering Tennessee Christian for sale was the organization's difficulty in attracting enough patients to be financially healthy", wrote new chief executive officer, Ernie Bacon, to the employees in a memo.

An Adventist Health System press release indicated that the market share of TCMC had declined to less than 10 percent in recent years, and that TCMC would need \$25 to \$30 million to upgrade its aging facility.

"Adventist Health System and the leadership of Tennessee Christian have actively focused on trying to improve Tennessee Christian's financial health for more than 25 years," states this release. "Tennessee Christian is located in an extremely competitive market, and has struggled financially despite the hard work of the staff and leadership. After much careful study, including an assessment by several outside consulting firms, AHS reached the difficult conclusion that Tennessee Christian could not survive in its current form."

The building is still open with far less activity than before. TriStar closed the emergency room and moved all acute medical care to nearby Skyline Medical Center but retained two of the most "unique" services at the former TCMC building, according to spokesperson, Karen Baker.

The Krueger Center, a physical rehabilitation unit allowing patients to practice everyday real life situations, and the mental health unit are still in operation but do not attract nearly enough patients to fill the 311 beds. A Hospice care unit is to be added.

No TriStar hospital offered rehabilitation on this level and their mental health services at the Parthenon Pavilion in Centennial Medical Center was remote from North Nashville.

The long-term management of the Madison campus is in the hands of Skyline Medical Center in nearby suburban Nashville, as are the licenses of both Madison and Portland hospitals. Regina Bartlett, the chief operating officer at Skyline, is the designated administrator.

The Portland campus, formerly known as Highland Hospital and then Tennessee Christian Medical Center/Portland, retains Eddie Smith as administrator, but now carries the name Portland Medical Center. Smith reports to the administration at Hendersonville Medical Center in southern Sumner County, another TriStar hospital.

The sale of TCMC directly affects the Middle Tennessee School of Anesthesia (MTSA) and the Madison Campus SDA Church.

MTSA has transferred 13 students to serving operating rooms at other hospitals and will continue its teaching program as usual. Ikey DeVasher, vice president and dean, said the school had already bought three acres and two buildings from the hospital before its sale.

"We are very blessed and will continue to flourish", she said. "I am very grateful for that but still hate to see our own hospital close."

MTSA accepts 70 students a year for a 28-month program.

The Madison Campus SDA Church, elementary

Center for Adventist Research
Andrews University
Berrien Springs Michigan

school and academy have some painful adjustments ahead.

Elder Lynn Schlisner, pastor at Madison Campus, says the congregation has lost more families than expected, despite the TriStar promise of jobs to all employees.

"I didn't expect to see folks outside of the administration leave," he said. "Though some found work in the surrounding TriStar hospitals, several of the medical and non-medical personnel opted to stay with the Adventist Health System. They used to employ more than 1,000 people and now have around 300."

Schlisner describes the hospital campus as a "ghost town" and adds the church now faces a bigger challenge in paying off a \$2.7 million debt remaining on a \$4 million educational wing and elementary school renovation.

He knows of 10-15 students who will not attend Madison Campus Elementary School this fall as a result of this body blow and hopes effective recruitment will fill the enrollment gap at the academy. "The biggest change will be for us to go from an institutional to a community outreach church," he said.

Madison Academy began the current school year with 116 Students, 18 more than last year. The Madison Campus Elementary school began the year with 174 students.

The Madison Rural Sanitarium began in 1908 as part of the divine school, sanitarium and farm educational model.

Some key dates in the history of Madison Hospital, later Tennessee Christian Medical Center

November 2, 1904— E.A. Sutherland wrote to Ellen White that Dr. John Harvey Kellogg was "very anxious that a Sanitarium be established on the school farm."

August 6, 1907— "Work started on the sanitarium building

July 31, 1908— "We have opened up our sanitarium in a small way," E.A. Sutherland wrote to Willie White. "We are not fully done, but we felt that we would announce that we are open to receive patients so that we may begin business."

1913—Fountain Head Rural Sanitarium opened near Portland, Tennessee, and later became known as Highland Hospital, then the Portland campus of TCMC.

August, 1927— A 12-room stucco cottage known as North Hall was completed.

1927, 28—The Administration Building went up.

1927-29— A major face-lifting gave the earlier frame buildings a coat of white stucco and finished in a Spanish style of architecture. Covered runways with arched openings on the sides connected these buildings.

1938— The Surgical and Obstetrical Wing was added.

1952— The Psychiatric Building was built.

March, 1960— The Board announced plans for a new hospital building. "This new construction is long overdue," wrote Dr. William C. Sandborn, president. "The original frame building that was constructed 50 years ago is still in use but is badly worn and needs to be replaced."

October 31, 1963— Ground broken for new hospital building. It opened in 1965.

July, 1965— First patient admitted into Nashville Memorial Hospital, the second medical center of its kind in North Nashville and now known as Skyline Medical Center.

1986— Madison Hospital changed to Tennessee Christian Medical Center

December 20, 2005— Tri Star and the Adventist Health System reached a definitive agreement for HCA to acquire Tennessee Christian Medical Center.

For fuller history of Tennessee Christian Medical Center, you can read a new book entitled *Profiles of Madison College Pioneers* by Albert Dittes. His e-mail address is Aldittes@aol.com

Home Coming 2006

By Bob Sutherland

Well, it's Sunday morning June 25, 2006, it has become traditional (begun by Howard and Esther Sutton) the past few years to have a pancake breakfast on Sunday morning, allowing for more fellowship and visitation before parting our separate ways. The last pancake, the mixed fruit, scrambled eggs, linkettes have been eaten and orange juice drunk and our hosts, George Stilwell and assistants, were pleased that all was consumed. Everyone has left and it's quiet around here, and I have the feeling one has when family has gathered and then departed.

You see, a large portion of the Madison family

(Alumni, attendees and friends) were home for the weekend again (annual home coming). They came from near and far. Some a little bent and some with ambulatory aids, some grayer or balder but they were home at Madison! We laid our weary bodies down late and rose early. The Madison Campus Church has become so large that they now have two services, the 8:50am and the 11:10am with Sabbath School classes in between. The alumni were asked to take the early service.

It all began on Friday when the early birds, George and Jean Roach, arrived at the Heritage House, soon followed by the Don Owsleys and Paul Blankenship. One of our Japanese guests, Kiyoshu Fujita, arrived early also and assisted Albert Dittes in putting up a large display in the church foyer. Friday evening we were blessed with a musical program rendered by the "Highlanders" a quartet (sometimes an octet) as it was this time. Albert Dittes is their accompanist. A great way to begin the Sabbath. Of course, there was the excitement of seeing old classmates and friends and meeting others that had experienced life at Madison College.

Sabbath morning necessitated an earlier rising than usual for those who had come from different time zones and even for the locals that did not usually need to be to church at 8:50 am. However, if you wanted to hear Dr. Shirou Kunihiro, who had come all the way from California, to speak to us, that's what you had to do.



Dr. Shirou Kunihiro

He awakened at 4 a.m. to work on his sermon notes. This was 2 a.m. in his normal time zone. His presentation was much appreciated and enjoyed. Brother Kiyoshi Fujita, vice-president for development at the former Japan Missionary College (now Saniku Gakuin Junior College) provided special music via DVD, featuring the college choir. It was nice to reunite with our former Japanese students.

Saniku Gakuin College (formerly Japan Missionary College) is owned and operated by the Seventh-day Adventist Church, and is part of a nationwide system of Adventist schools. Other SDA schools in Japan include: 5 kindergartens, 10 elementary schools, 3 junior high schools, and one senior high school. These schools are part of a world-wide system of schools

operated by the church - the largest Protestant education system in the world.

When the clock struck 12:15 pm, Linda Walters, (our caterer) and her assistants were ready to serve a delicious meal, attested to as I observed several going to the kitchen to tell them so. Good food and visitation was followed by more visiting down at the Heritage House. I noticed some of you failed to register. The ladies, Lynn Grundset Reynolds and Renee Crowell, President and vice-president, respectively, of the Academy Alumni Association very graciously took care of registration to give Stella relief. Only 73 registered. It was obvious that there were many more than that.

At the vesper hour, Brian Traxler gave a power point presentation on the life of Lida Funk Scott, founder of the Layman Foundation. Brian is the head of the E. A. Sutherland Education Association (EASEA) a body for the accreditation of Self-supporting schools. Schools accredited by EASEA are recognized by the state.

At the business meeting, after vespers, the association members voted to retain the present officers and Board members adding Brian Traxler, Ruth Harris, and Louise Hoover as Secretary/Treasurer with Stella Sutherland, assistant secretary/treasurer. for the next biennium.

The Madison Impact at 2006 ASI

by Albert Dittes

DALLAS--The legacy of the great Madison personalities surfaced unexpectedly at this year's ASI convention in one of the main sermons by Mark Finley, now world director of evangelism for the Seventh-day Adventist Church.

In his Thursday morning sermon, Elder Finley shared some principles of the early ASI leaders he had presented at an earlier ASI board retreat. He cited E.A. Sutherland and Percy Magan moving their school from Battle Creek, Mich., to a rural location in Berrien Springs, an act requiring great faith and courage, as an example of "simple reliance upon God."

In saying ASI was born in sacrifice, he pointed out that Sutherland invested (continued on page 4)

(Continued from page 3 column 2)

all his inheritance in the Madison school and that his fellow workers put their lives on the line by working for \$13 a week at Madison.

“The work of God will never be finished without sacrifice,” he said. “Another hallmark of ASI,” he said, “is the sharing of resources.” And on this point he dramatically told the story of how E.A. Sutherland encouraged his major donors to put money into the struggling medical program at Loma Linda when just to keep going at Madison was a financial battle in itself.

The Madison story couldn't have had any more visibility than that! Elder Finley, a powerful Adventist preacher, was at the top of his form when he told these stories. The scores of people in the audience will never forget them, I am sure.

We felt the Madison influence at the booth as well as one of the main meetings.



Esther Xu Wong & Samuel Wang

Samuel and Esther Xu Wong were born in China and came to the United States in 1996. They returned to their native land in 2003 to start a school based on the Madison model in South Central China, the same area of China that Tennessee is to the United States.

Their school name, meaning **New Heaven and Earth** in Chinese and called **New Horizons** in English, is on farmland in a rural area and features the Bible as the center of the curriculum. Two classes have graduated so far.

“Our school is a miracle school in a sense,” said Samuel Wang.

Carola Janiak & Catherine Gray operated a busy booth near us, charging \$1 a minute, and said that Madison inspired them to start Hands-on Medical Massage, a medical ministry school in Yucaipa, Calif.

“We pray with our patients, and that makes all the difference,” said Carola Janiak. “Wisdom from God is an essential part of the healing process and is what

makes the difference. We draw inspiration from the faith-based work of Madison.”



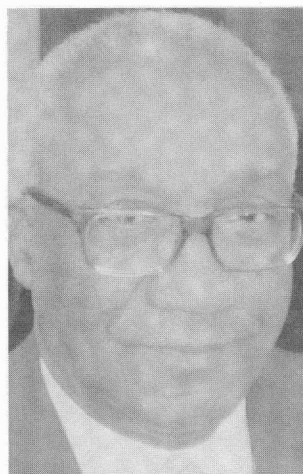
Carola Janiak & Catherine Gray

Another part of the Madison model they liked was shortened training programs and sending their graduates out to work in other places. Learning massage there takes five months for the day classes and

eight months for students studying in the evening. All graduates must submit a business plan before receiving their diplomas.

Their goal is for their graduates to start schools and sanitariums as once was at Battle Creek. One student has already gone as far as Egypt.

“Most of our students are Seventh-day Adventist,” they say, “but we still get to share with people who love the Ellen White writings. They make us appreciate our health message all the more.”



Dr. Samuel DeShay

Dr. Samuel DeShay operated a booth across the aisle from our booth developing the self-supporting concept on an unusual spot in Africa. He has been given a 650-acre island for use as a home for displaced children called **The Life Extension Institute**. Here he plans to have a food bank, clothing depot and health center on what he has named *The Christ Island* on Lake Victoria, Africa. This lake borders Uganda, Tanzania and Kenya.

Dr. DeShay said that his sister, Emma Chaffi, was director of Nursing at Riverside Hospital in Nashville for eight years, and that her (continued on page 5)

children went to academy at Madison.

He, himself, served as a physician at Riverside Hospital and a nurse at the hospital knew Nellie Druillard, the founder of that institution. "When I went there as a physician, Mrs. McDonald talked a lot about Mrs. Druillard," he said. He said his great-grandfather was 11 years old when the stars fell in 1833 and lived on to be 114 years old.

In addition to these individuals, several self-supporting schools operated booths at the convention exhibit hall as did the Middle Tennessee School of Anesthesia (MTSA) and E. A. Sutherland Education Foundation (EASEA).

FIRE DAMAGES MADISON ACADEMY LAUNDRY

Madison Academy Linen Service sustained significant damage when lightning struck during a storm on May 31, 2006....

The loss has been estimated to be about \$3.3 million. This includes the structural damage to the building, equipment, linen and loss of revenue....

Although the fire was confined to the ironing and folding area of the Line Service, intense heat caused damage to the equipment in other parts of the building. The heat from the fire caused the steel beams supporting the roof to buckle and sag. Structural damage will be repaired and some enhancements added. Most of the damaged equipment will be replaced with new, updated equipment. Although plant operations have been suspended for the time being, two other commercial laundry facilities in middle Tennessee are being used to fulfill contracts....

Madison Academy Linen Service is owned and operated by Madison Academy, a day academy of the Kentucky-Tennessee Conference, located in Madison, Tennessee. The academy has operated the industry since 1964 which provides employment for 17 full-time adults and up to 50 students of the school.

The above is an excerpt from an article in the *Connection* The official quarterly newsletter of the Kentucky-Tennessee Conference, July 2006. Written by Marvin Lowman, Conference Secretary.



East outside wall in area where fire started



Same wall from inside



Gym where clean laundry is assembled for delivery

“Do good to thy friend to keep him, to thy enemy to gain him.” Ben Franklin

Ball, Clyde Cleveland, 64, N '63, Anes. '67, died of a heart attack Sunday, July 23, 2006 at Volunteer Community Hospital in Martin, Tennessee. At the time of his death, he lived in Greenfield, Tennessee.

Clyde was born November 27, 1941, in Virginia to the late Cleveland Clyde Ball and Violet Louise (Comer) Ball. He was a retired certified registered nurse anesthetist, loved hunting, fishing, and golfing, and was a member of the Seventh-day Adventist Church.

Survivors include: wife Trannie Woodson Ball; daughters Ashley (John) Martin of Frankfort, Ky. and Jacquelyn D. Locker of Columbia, Tn; sons Clyde Nelson (Lori) Ball of Portland, Ore., Paul E. Blenis of Texas, and John R. Blenis of Trezevant; Tenn. sister July (Lester) Pelley of Pennsylvania; brothers Roger Ball of Maryland and Ernest (Gaye) Ball of North Carolina; and 11 grandchildren and five great-grandchildren.

Brownlee, Elsie Stinchfield, N '50, died May 30, 2006, at her home in Gallatin, Tenn. Born in Nashville, Tenn. September 23, 1926 to Hugh and Ethel Woodson Stinchfield. She grew up within walking distance of the old Kentucky-Tennessee Conference office in West Nashville. Her father was a bookkeeper for the Louisville and Nashville (L&N) Railroad. Elsie graduated from Greater Nashville Junior Academy, then finished secondary school at Fletcher Academy, Hendersonville, N.C. She attended nursing school at Madison College, and after graduation she taught Obstetrical nursing there.

Her nearly 50 years of service in the nursing profession included being director of nurses at Highland Hospital, Portland, Tenn., Hartsville General Hospital, Hartsville, Tenn., and night supervisor at Sumner Regional Medical Center, Gallatin, Tenn.

Surviving are daughters Jacque Hughes of Birmingham, Ala. and Judy (John) White of Hartsville, Tenn.; Sons, John (Linda) Brownlee of Oregon and James (Sarina) Brownlee of Gallatin, Tenn.; Brother Hugh Stinchfield of Collegedale, Tenn.; 12 grandchildren and 10 great-grandchildren.

Detamore, Otis Clifton, 75, BSN '58, Anes. '68, died quietly at home in Gallatin, Tenn. on the evening of April 15, 2006, after battling a long illness. He was a member of the Hendersonville Seventh-day Adventist Church for the past 22 years. He was born on March 25, 1931 to Samuel and Irene Detamore in Ruckersville, Va. He was a veteran of the Korean War. He worked at Sumner Regional Medical Center as an anesthetist for more than 25 years, and retired in 1995. He is survived by his wife of 52 years, Marion Russell Detamore; his mother, Irene Detamore (age 105); his three children,

Dianna West, Clifton Detamore and Denise Detamore; sisters, Selena Baugher, Ethel Baugher, and brother, Delbert Detamore and seven grandchildren. The family requests that in lieu of flowers, a charitable donation be made to the Hendersonville Seventh-day Adventist Church, Alive Hospice of Nashville or a charity of your choice.

Drury, Shirley E., N '46, succumbed to Parkinson disease at Oakmont Nursing Home, Greeneville, S.C., June 8, 2006. She was born in Marshalltown, Iowa on October 22, 1924 the daughter of Wesley C. and Letitia Lemmon Drury. She graduated from Marshalltown High school in 1942. Shirley and her sister Gladys attended nursing school at Madison College, Madison, Tenn. graduating together in 1946. She loved her Madison family for over 60 years and when able was an active volunteer with “The Survey Team”.

During her professional career, Shirley worked in South Carolina, Iowa, Calif., Maryland and retired after serving 25 years at the Bordeaux Metro Hospital, Nashville, Tenn.

Long time friend, Jessie Mae Edwards, commented, “She took many of us under her wing when we first arrived at Madison in the 40's and 50's.” Jessie Mae sent a donation to the alumni association in remembrance of Shirley

Pride, Forrest Leroy, 88, N '46, Anes. '52 expired February 14, 2006 at Takoma Adventist Hospital, Greeneville, Tenn.

In his work as an anesthetist he had served at Takoma Hospital, Laughlin Memorial Hospital and the former Greeneville Hospital.

Forrest was a member of the Greeneville Seventh-day Adventist Church. He was also a member of Veterans of Foreign Wars, the Greene County Color Guard, the Lions club and the Amateur Radio Club

Surviving are his wife Margaret Bull Pride, N '45, son Steve Pride (Mary Lou) of Collegedale, Tenn.; daughter Shelley Parker (Jack), Silver Springs, Nev.; a sister Frances Pride, of Greenville and six grandchildren.

SNOW BIRDS

The weather is beginning to get cooler and you will be heading for warmer climates. Please, please make arrangement for your mail. The post office returns it to us “temporarily away” and we don't know when you return. Therefore you may miss 2 issues of the SURVEY. Please help us.



L-R Albert Dittes, Will Labrenz, John Watkins, Judi Hartman, Lisa & Todd Parrish



L-R Mavis Savage Sutherland, Shaen Sutherland, Wilfred Stuyvesant, Don Owsley, Jim Culpepper, Sue Owsley



Sumni Yeno Yoshimura, Stella Sutherland, Sam Yoshimura



Mary Bell Ramsey Martin & Edwin Martin



May Kunihira, Henry Shirou Kunihira, back row L-R Stella Sutherland, Viola Salsgiver Knight, Mavis Savage Sutherland, Shaen Sutherland, at Sunday breakfast

FROM HERE AND THERE



Arizona: Charlotte Hunt Alger, N '41, sent this distressing(to me) note, "I have appreciated very much the Survey but like Harry Bennet, S '33-'34, I too am 90 and closer to 91. I'm a graduate of '41 which was a great class.

My health isn't very robust but God has blessed me giving me this long. Only one of my classmates I am still in contact with. I talk with Dorothy Bowes N '45 often.

When I am gone nobody will notify the alumni, no doubt, so since I have not paid my dues for sometime, you may remove my name from the list. My former address was: P O Box 726, Canyonville, OR. 97417

Keep up the good work and God bless you. (Charlotte, as long as you can read it or hear it read, and as long as I am in this office you will still get the Survey. . I recently turned 80, Bob)

California: Geraldine "Gerry" Thomas, BS '43, sent this note with dues and extra, " Dear Stella and Bob,

Sorry I am so late getting a check to you for alumni dues and a little extra.

I have had a few medical problems this year but am feeling much better at the present.

Thank you for all your work in getting the Survey out. I really enjoy getting it.

Coupon

1. Survey & Dues 1 yr. (\$25)_____.
2. Sending \$_____ for Office Help.
3. God's Beautiful Farm (\$12) _____.
4. Sending \$_____ for Heritage House Restoration.

MADISON SURVEY & ALUMNI NEWS

Albert G. Dittes, President/Editor

Bob Sutherland

Managing Editor & Executive Secretary

Home Phone: 615-859-5181

Office: 615-865-1615

Toll Free 1-888-254-1615.

(ISSN 32524000) is published quarterly by

Madison College Alumni Assoc. Inc.

POSTMASTER: Send address changes to:

P O Box 6303 Madison, TN 37116-6303

Andrews University
James White Library
Bertin Springs, MI 49104-1400

Change service requested

Madison, TN 37116-6303

P O Box 6303

Madison College Alumni Assoc., Inc.

