



CUMBERLAND ECHOES

1960

the staff

sponsor.mrs. dorothea stearns
editor.monty georgeson
layout editor.elaine ferris
art editor.alexander rojas
copy editor.steve jones
business manager.daniel francomano
assistant business manager.wayne hayes
advertising manager.dennis randall
snapshots.carole franklin
secretary.sallie lazalier
typists.eva campbell
 jane becker
photographer.pino kinkela
assistant photographer.paul nettlund
academy editor.hazel griffin
assistant academy editor.priscilla bramble
academy business manager.tommy young

presents

cumberland

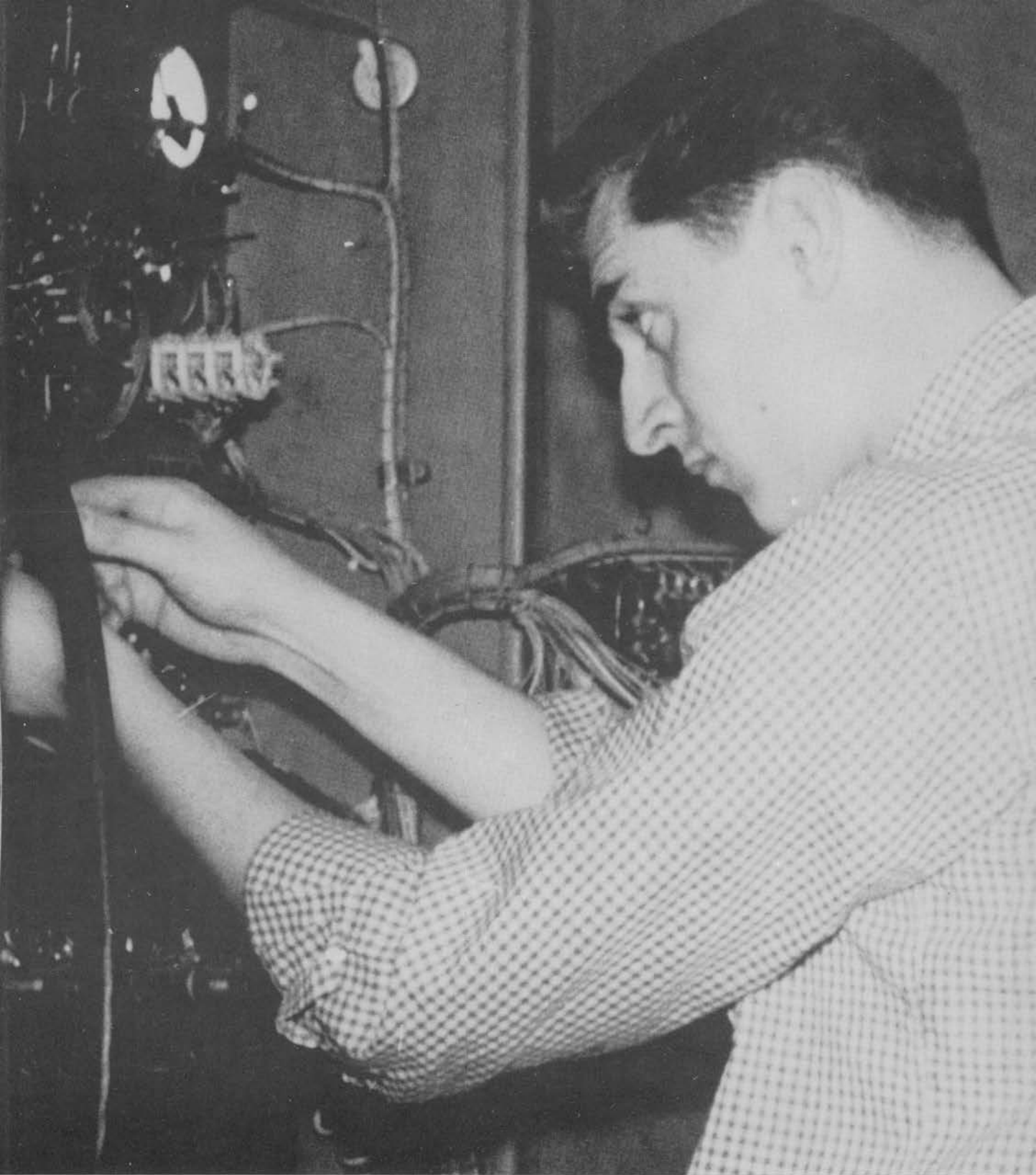
echoes

for

1960



it's worship



it's work



it's study



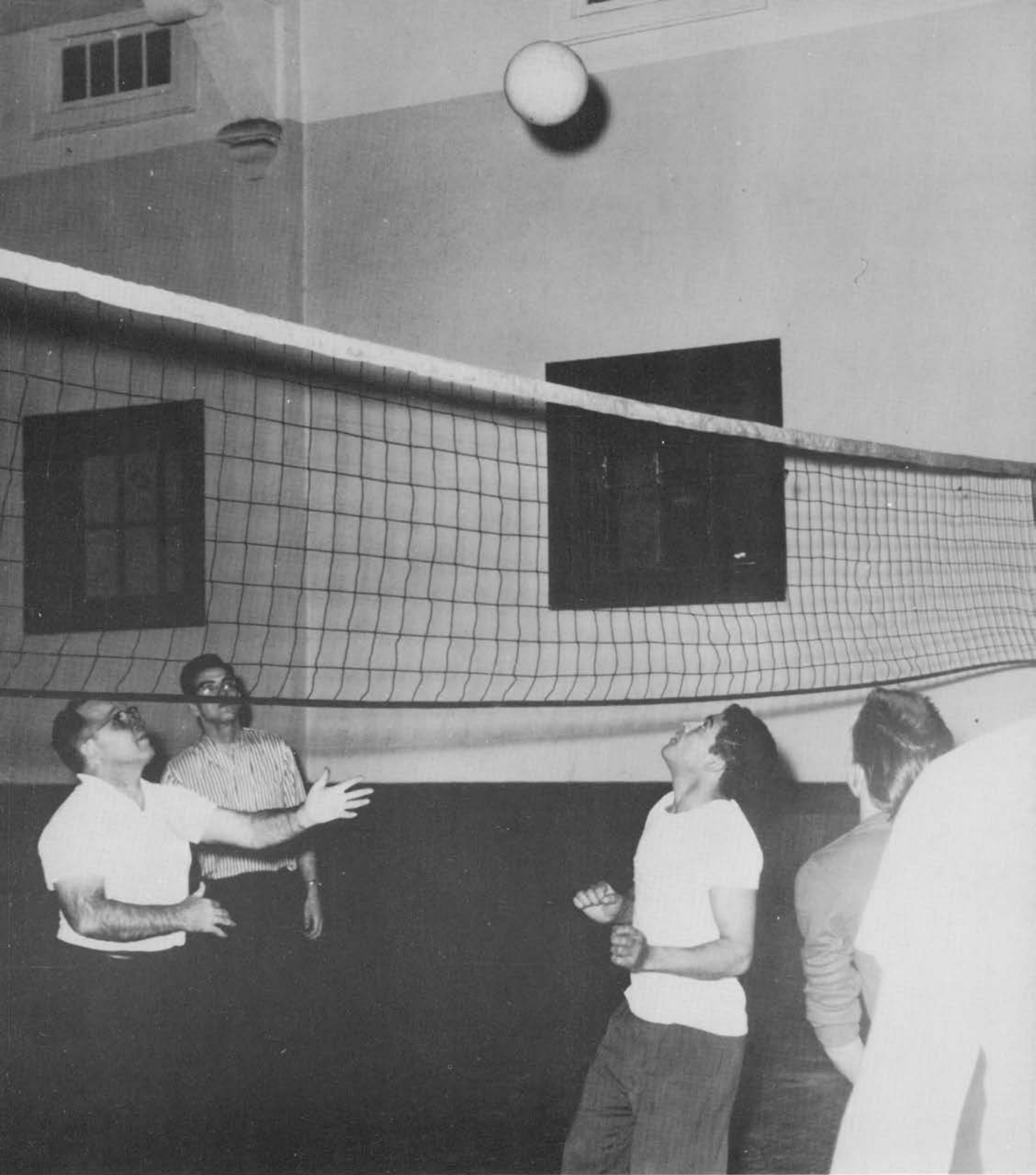
it's success



it's loneliness



it's friendships



it's recreation



it's serenity



it's

madison
college

madison, tennessee

1960



I AM FOUR MONKEYS.

The first sits on a limb and chatters at passers-by.
The second is stuffing his belly with coconuts.
The third is at the top of the tree quizzing the sky.
The fourth is chasing another monkey.

I AM FOUR MONKEYS.

HOW MANY MONKEYS ARE YOU?

In an unforgettable message, a faculty member presented this thought-provoking characterization to the Students of Madison College. He said that in too many of us there is a missing monkey – the one who looks *high* for his standards of life.

This man has spent a number of years inspiring students of Madison College to find their missing monkeys – in the form of elevated taste in music and fine arts; in the form of a streamlined, efficient associated student organization; in the form of courageous vision for the kind of future service that God Himself would ask.

In appreciation to *Francis F. Cossentine*, the man who has proved to his students that he has found his third monkey, this 1960 edition of CUMBERLAND ECHOES is dedicated.



administration



FROM YESTERDAYS FOR TODAY --

"We as Christian teachers are here to lead you and direct you in the paths of unselfish service and usefulness for the Master."

"Our goal is to send forth, as finished products of Madison, young men and women thoroughly consecrated as Christians, highly developed intellectually, and physically developed and trained to work with their hands. Unselfish, sanctified service to their fellow men should ever be the goal and work of Madison Graduates."

"Hold your head up, throw your shoulders back, stand erect, and keep a level eye. You are a prince, the son of King Emmanuel You have an honor, a mission, and a responsibility above that of other men Stoop not to pecuniary gain, neither be swept away by the vain allurements of this momentary world. *Always remember that you are heirs to an everlasting kingdom.*"

WILLIAM C. SANDBORN
President of Madison College
B.S., Madison College
M.A., George Peabody College
Ed. D., George Peabody College



FROM TODAY FOR THE FUTURE --

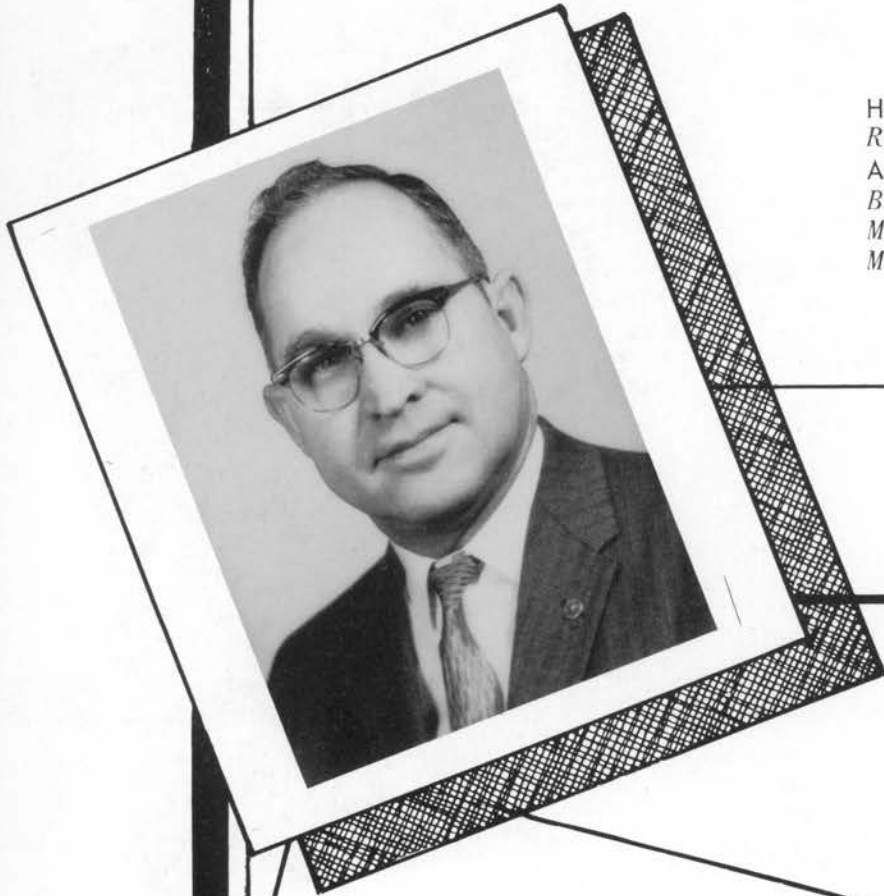
Madison College, for over fifty years, has been engaged in a great and worthy project – that of educating those who come into its doors for work in the Father's vineyard on a self-supporting basis. Though shaken by many winds, it has never lost its vision.

How we, as a faculty, pray that this year has brought to you a conviction of God's purpose in bringing you to this school; and that you have not thwarted His plan since you arrived here. We desire to walk with you through the gates into the city our Father is preparing.

Today we must actively be at the task of directing our lives to the final objective in life, for the closing of the curtain on time. The raising of the curtain on eternity is dangerously near.

Pray, study, work,
And the Lord will see you through.
His vineyard needs your help--
Can He count on you?

JAMES ZEIGLER
Dean of Student Affairs
B.S., Madison College
M.A., George Peabody College



HOMER R. LYND

Registrar

Associate Professor of Education

B.S., George Peabody College

M.A., George Peabody College

M.Ed., George Peabody College

To Homer Lynd, as Faculty Co-ordinator for the Associated Students of Madison College, the students express their appreciation--

- *for sympathetic, personal interest in each student
- *for the tactful liaison work between students and faculty
- *for his willingness to help a struggling student decide the course of study best suited to his personal needs.
- *for his never-failing attendance and interested participation in the Student-Teacher Councils.

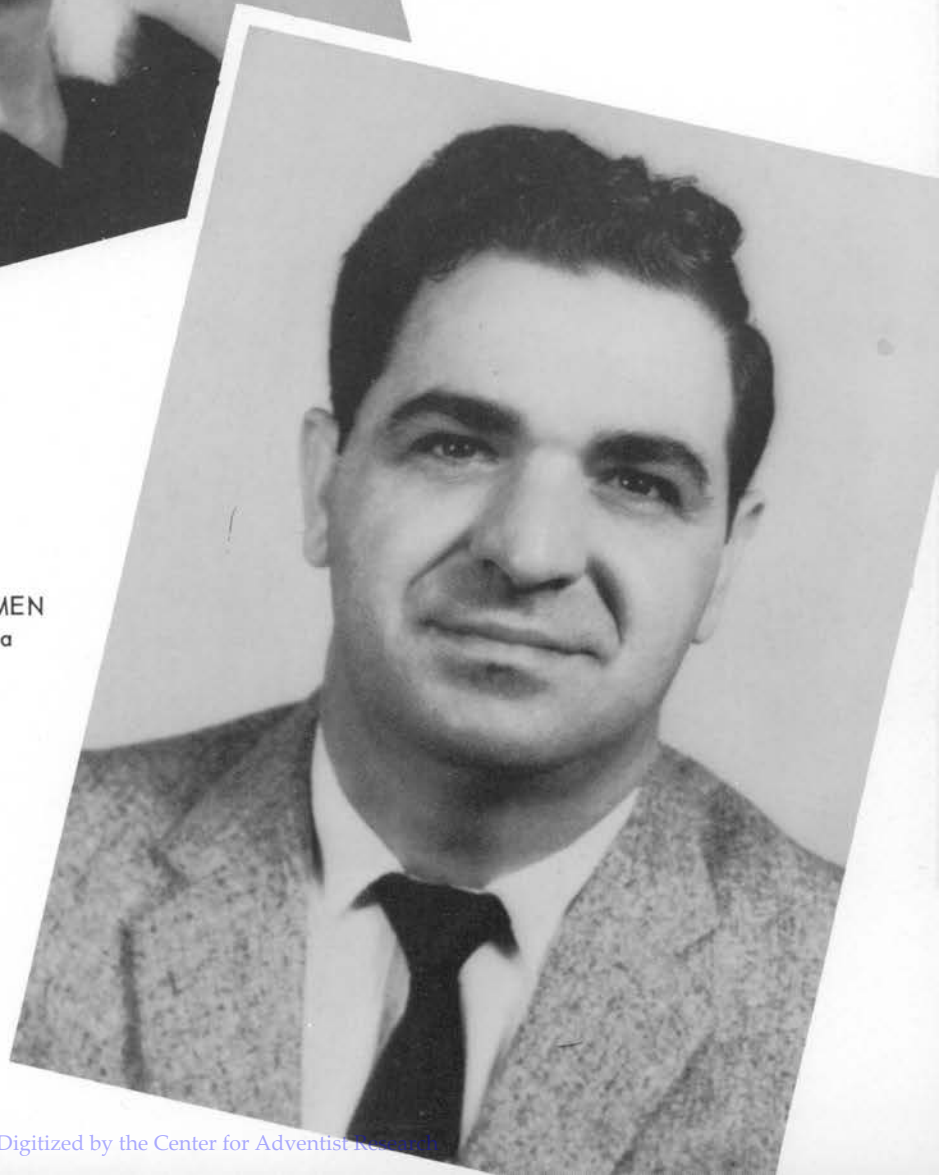
DIRECTOR OF PERSONNEL
George Walper



DIRECTOR OF STUDENT FINANCE
Ed Hassenpflug



DEAN OF WOMEN
Lorene Temples



DEAN OF MEN
Vito Fragola



faculty



BERNARD V. BOWEN
 Assistant Professor of Anesthesia
B.S., Madison College
C.R.N.A., Norwegian-American Hospital
School of Anesthesia

RUTH CHASE
 Director of Student Health



MILES COON
 Assistant Professor of Religious Education

FRANCIS COSSENTINE
 Chairman, Music Department
B.A., La Sierra College
M.M., Northwestern University
Additional study, George
Peabody College

ELIZABETH COWDRICK
 Associate Professor of English
B.A., Union College
M.A., Northwestern University
Additional study, George Peabody College

LOUIS DICKMAN
 Principal, Academy
B.S., Madison College
M.A., George Peabody College



GLADYS DURAN
 Associate Director, Nursing Service
B.S., Madison College

GODFREY DURAN
 Associate Supervisor in Operating Room
B.S., Madison College



FLORENCE FELLEMEDE
 Assistant Professor of Physical Therapy
R.P.T., College of Medical Evangelists



WINSTON FERRIS
 Principal, Elementary School
B.A., Emmanuel Missionary College
Additional study, University of Michigan

REBA FOSTER
 Instructor in Piano



MARY KATE GAFFORD
 Assistant Professor of Library Science
B.A., Mary Hardin Baylor College
B.S.L.S., George Peabody College



LEONA GULLEY
 Instructor in Nursing
B.S., Washington Missionary College

NORMAN GULLEY
 Assistant Professor of Bible and History
B.A., Southern Missionary College
M.A., Seventh-day Adventist
Theological Seminary
B.D., Potomac University



JAMES HANCOCK
 Instructor in Nursing
B.S., Madison College

BETTY KLOTZ HARTER
 Assistant Professor of Education
B.S., Wittenberg College
Additional study, George
Peabody College



JEAN HASSENPFUG
Instructor in Anesthesiology
B.S., Madison College
C.R.N.A.

GILBERT H. JOHNSON, M.D.
Radiologist
B.S., College of the Pacific
M.D., College of Medical Evangelists
D.A.B.R., American Board of Radiology



CYRUS KENDALL, M.D.
Associate Professor of Medical Technology
B.S., Madison College
M.D., College of Medical Evangelists

HAROLD KEPLINGER
Associate Professor of Industrial Arts
B.S., Southern Missionary College
M.A., George Peabody College

THOMAS LINVILLE
Instructor of Anesthesiology
B.S., Madison College
C.R.N.A.

FELIX LORENZ
Professor of Religious Education
B.A., Union College
M.A., Seventh-day Adventist
Theological Seminary
B.D., Seventh-day Adventist
Theological Seminary



OLGA LORENZ
Associate Professor of Nutrition
B.S., Madison College
M.S., University of Tennessee

WORTH LOWDER
Assistant Professor of Business
Administration
B.S., Madison College
M.A., George Peabody College



CARLOS McDONALD
Assistant Professor of Medical Technology
B.S., Madison College
M.A., George Peabody College

DORIS MORRIS
Instructor in Ceramic Art

LESLIE MORRIS
Associate Professor of Chemistry
B.S., George Peabody College
M.A., George Peabody College

EDITH MUNN
Instructor in Nursing
R.N., Madison Sanitarium and Hospital



MAXINE PAGE
Instructor in Nursing
B.S., Madison College
Additional study, George Peabody College

VICTOR RIVERIA
Instructor in Art
B.A., University of the Philippines
Member of Art Association of the Philippines



HELEN SANDBORN
Assistant Professor of English
B.S., Madison College
M.A., George Peabody College

WILLIAM D. SANDBORN
Instructor in X-Ray
A.R.X.T.



JOE SCHNELL
Instructor in Bible
B.S., Madison College

JEANNETTE SEGO
Instructor in Nursing
B.S., Madison College



VIRGINIA SELLARS
Instructor in Nursing
B.S., Madison College

BOB W. SILVER
Instructor in Printing
B.S., Madison College

PATRICIA SILVER
Instructor in Music

FREDA SOSSONG
Director of College Food Service



DOROTHY STEARNS
Instructor in Secretarial Science

JAMES STEARNS
Assistant Professor in Agriculture
B.A., La Sierra College
B.S., La Sierra College
M.S., University of Tennessee



LOTTIE STEWART
Student Health Service
B.S., Madison College

R. E. STEWART
Instructor in Foreign Languages
B.S., Madison College

WALTER E. STRAW
Professor of Philosophy
B.S., Emmanuel Missionary College
M.A., University of Colorado
Additional study, George Peabody College

FLORENCE TAYLOR
Instructor in English
B.S., Madison College



DORIS THOMSON
Assistant Professor of Nursing
B.S., Madison College

ELIZABETH THORGESON
Assistant Professor of Medical
Records Technology
B.A., Washington Missionary College
R.R.L., R.M.S.



EDNA THORNTON
Assistant to the Registrar

GEORGE THORNTON
Assistant Professor of Medical Technology
B.S., Madison College
Additional study, Vanderbilt University



FRED G. WEDEL
Instructor in Industrial Arts



BESSIE WEIR
Instructor in Nursing
*R.N., College of Medical Evangelists
Additional study, University of
Pennsylvania*



ALFRED WILHELMSSEN
Associate Professor of Agriculture
*B.S., Emmanuel Missionary College
M.S., Michigan State University*



FREDA ZEIGLER
Assistant Professor of Health and Nursing
*B.S., Madison College
Additional Study, George Peabody College*

JAMES ZEIGLER
Professor of Biology
*B.S., Madison College
M.A., George Peabody College*

RUTH ZOLLINGER
Assistant Professor of Nursing
*B.S., Washington Missionary College
M.A., Vanderbilt University*





classes

Patricia Silver



Maureen Drake



Alice Surdahl



Pat Rosenthal



Ronald Schmale



WHO'S
WHO IN
AMERICAN
COLLEGES

SENIORS



Sponsor
HAROLD KEPLINGER



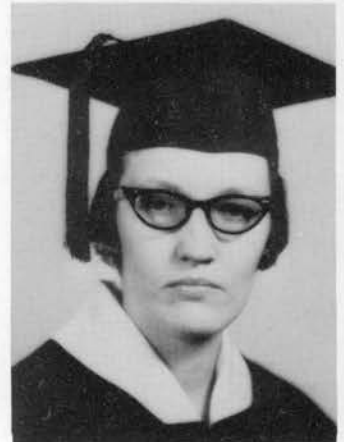
President
RONALD E. SCHMALE
Madison College
Medical Technology



Vice-President
PATRICIA SILVER
Madison College
Science



Secretary
MARGUERITE ROBERTS
Nashville, Tennessee
Nursing



Treasurer
DORIS DELVIN
Woodward, Oklahoma
Nursing

AIM:
Excelsior

MOTTO:
Educating for Eternity

Pastor
YONGOETHE LINDSAY
Nashville, Tennessee
Religious Education
(Portrait Not Available)



MARGARET ANAYA
Arlington, California
Nursing

LUCILLE EK
Duluth, Minnesota
Nursing

WOODROW EK
Duluth, Minnesota
Nursing

MAUREEN DRAKE
Santa Anna, Texas
Nursing



HAROLD ILES
Madison, Tennessee
Religious Education

MARGARET JOHNSON
Riverside, California
Nursing, Anesthesiology

DELPHIA LADNER
Kelowna, B.C., Canada
Nursing



LOUISE MAXWELL
Madison, Tennessee
Nursing



NADINE MYRICK
North Carolina
Nursing

EUGENE POST
Madison, Tennessee
Science

LILA M. RING
Stratford, Connecticut
Nursing



PAT ROSENTHAL
Austin, Minnesota
Nursing





PAULINE SANDERS
Riverside California
Medical Technology

ESTHER SCOTT
Madison, Tennessee
Science

ALICE SURDAHL
Bozeman, Montana
Nursing

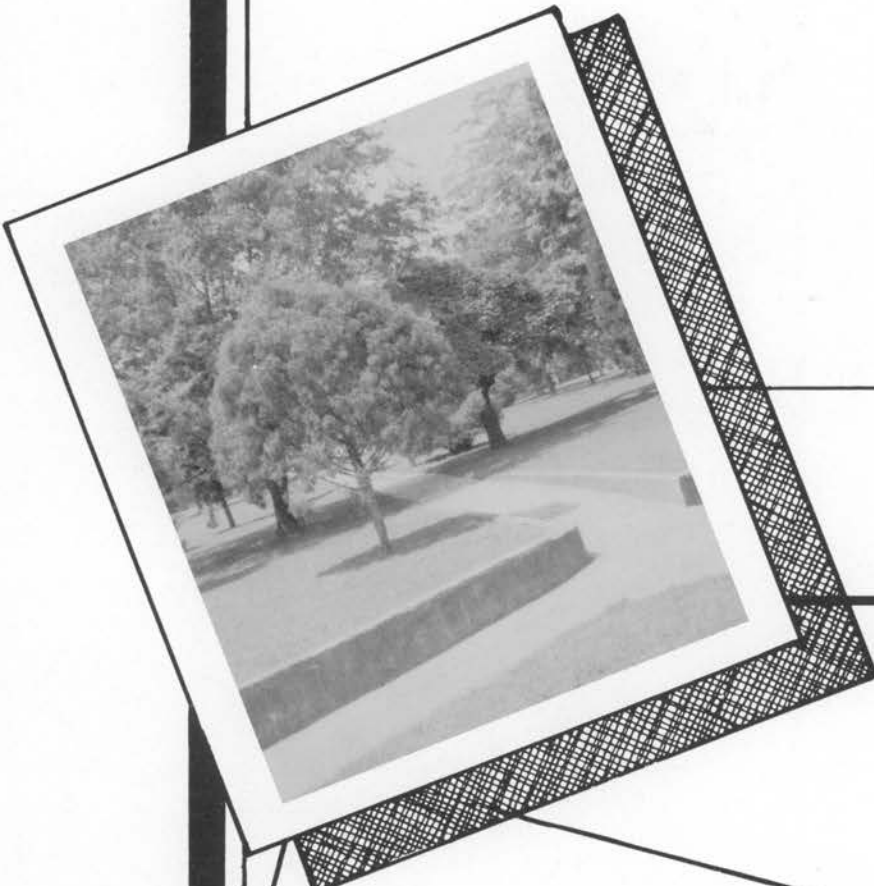
LOIS WALPER
Madison, Tennessee
Nursing



ADRIAN WYNN
Hendersonville, North Carolina
Medical Technology

RACHEL YATANI
Japan
Nursing





TO THOSE WHO FOLLOW--

As we take the path that leads away from this campus, we, the Seniors of 1960, wish to express humble admiration to our college, and to our teachers – for *now* we see the purpose of their service.

Our way of paying tribute to our teachers is a memorial, not of stone or of marble, but of dedicated service to humanity.

Our prayer is that we may join hands with our world-wide brotherhood of visionary workers, and help accelerate the tempo of the advancement of God's work.

--SENIORS OF 1960

REGISTERED

NURSES

JULIA ADAMS
Shasta, California

DORIS BROWN
Turtletown, Tennessee



JUNE DAVIDSON
Woodbury, Tennessee

JOANNE FOSTER
Clawson, Michigan

IDA GORDON
Mountain Grove, Missouri





VIRGINIA ISOM
Chandler, North Carolina



RUTH McCLELLAN
Delco, North Carolina



MARTHA ANN NORRIS
Birmingham, Alabama



DAMARIS RIVERA
St. Just, Puerto Rico



LAURA SLATTERY
Madison, Tennessee

PAT SUTTON
Madison, Tennessee

NANCY FAY THEOBALD
Cincinnati, Ohio

MARY LOU WARD
Malvern, Arkansas





EUGENE V. CARRIS
Madison College



PAULINE SANDERS
Riverside, California

MEDICAL TECHNOLOGY

RONALD E. SCHMALE
Madison College

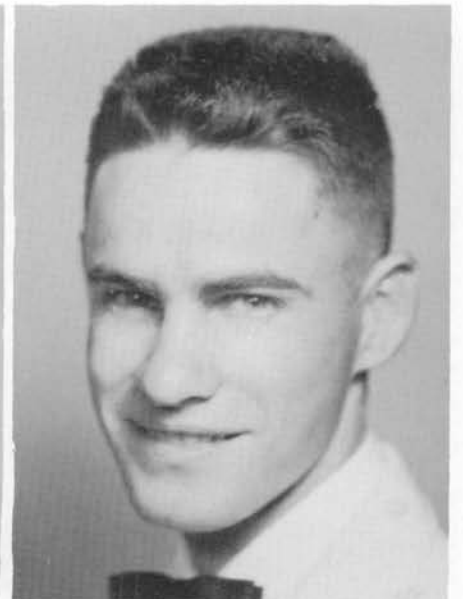
TONY C. WILLIAMS
Bragg City, Missouri

ADRIAN WYNN
Handersonville, North Carolina

PICTURE

NOT

AVAILABLE





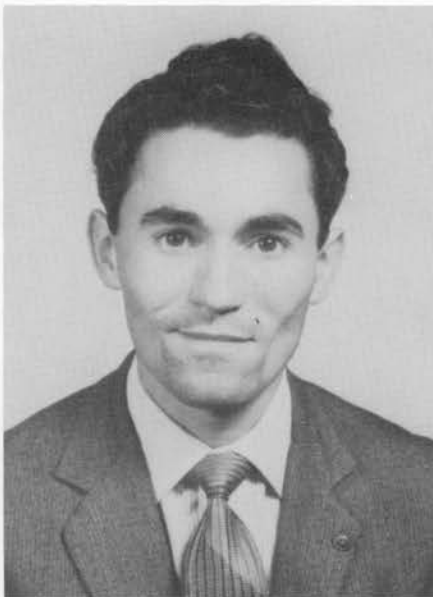
GEORGE ANDERSON



CHARLEY CULBERTSON

ANESTHESIA

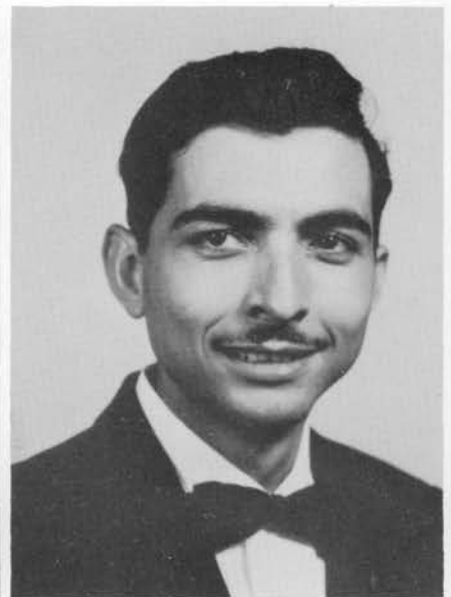
DAVID LIMA



CHARLES PIRES



ABIMELEC SAUCEDO





EVELYN AITKEN
Madison, Tennessee

ELSIE ARELLANO
Embudo, New Mexico

MEDICAL
RECORDS
TECHNICIANS

GERALDINE JANE BECK
Lincoln, Nebraska





ZOE CRUZEN
Madison, Tennessee



PATRICIA HANCOCK
Madison, Tennessee

LINDA ROACH
Madison College

EDRIS JACKSON
*Spanish Honduras,
Central America*





Sponsor
FLORENCE FELLELENDE

President
GENE WHEELER
Fort Collins, Colorado



Vice-President
MONTY GEORGESON
Fresno, California

PHYSICAL THERAPY



Secretary-Treasurer
MARJORIE HANCOCK
Trussville, Alabama



ALFRED FUJITA
Nakaminato City, Japan

JANE HANCOCK
Trussville, Alabama

MARGARET LEMACKS
Fort Myers, Florida





RUPERT HAM YING



KENNETH MOORE

X-RAY

CHARLES TREMPER



CINDY TREMPER



VICTOR RIVERIA





William C. Sandborn
Sponsor



Angel Jeminiz
President



Mary Gill
Vice-President



Sylvia Kaldahl
Secretary

JUNIORS

Margaret Woodruff
Treasurer

Adil Moosa
Parliamentarian



Nelda Ackerman

Isabell Altenbrun



Juan Anglada

Grace Bottsford



Margarita Casillas

Nancy Criswell

Beth Edwards

Elaine Ferris





Joe Fields



Carol Hilgers



Stephen Jones



Sun Hie Lee



Audrey Myers



Geneva Owens



Wesley Paul



Elenia Portalatin

Velma Robinson

Gene Sellars



Kenneth Sowell

Clarence Twombly

Sue Vestal





Sponsor
James E. Stearns



Secretary
Marjorie Lofton

President
Rex Leatherwood
Portrait Not Available

SOPHOMORES

Assistant Secretary
Sylvia Boley



Vice-President
Pat Adkins

Assistant Treasurer
Correne Bunch



Treasurer
Eddie Smotherman

Sergeant-At-Arms
Larry Kelley





Edgar Aitken



Carol Burchard



Tom Bates



Lily Cabansag



Henry Bedford



Harold Carpenter



Mary Ann Boley



Dorothy Chase



Charles Clegg



Edith Durocher



Marlowe Coppage



Alicia Espinoza



Robert Devlin



Lavelle Eversoll



Stan Dovich



Glenn Ferguson



Lorraine Fields



Walter Gorovenko



George Figeroa



Dorothy Graham



Norma Forrester



Dave Gunderson



Eva Goldberg



Harry Hall



Carolyn Heer



Lorna Holly



Barbara Hill



Karylyn Hudson



Carolyn Holder



Wilma Keller



Laura Holly



Faye King



David Kingry



Sallie Lazalier



Robert Kohler



Agida Limon



Esther Kowalski



Ramona Limon



Juanita Lanham



Marvin McColpin



Pat Mendenhall



Esther Perales



Juanita Mercado



Dennis Randall



Myrna Moore



Rebecca Ravenell



Araxy Moosa



Patricia Ricks



Mavis Rushing



Mary Lou Sullins



Henry Scoggins



Ethelyn Taylor



Alice Sheffield



Esthell Thomas



Roy Steck



Francisco Velasquez



Martha Walters



Gerald Williams



Lanny Weaver



Dorris Wilson



Joseph Wedel



Lydia Zaft



Elisabeth Williams



Shirley Zinke



SPONSOR
Betty Klotz Harter



PRESIDENT
Gene L. Wheeler



VICE-PRESIDENT
Kay Forrester



TREASURER
Eugene Domke

FRESHMEN

SECRETARY
Patricia Sheffield



PARLIAMENTARIAN
Terry Trivett



PASTOR
Wayne Hayes





Maloa Alexander



Elaine Allen



Ardith Anderson



Josephine Anderson



Donna Auge



Esther Auge

Mary Baker

Clyde Ball

Malissa Banks

Eddie Barton





Wayne Betchold



Jane Becker



Sarah Bigelow



James Binney



Kaye Bramble



Robert Bratton

Betty Brooks

Newell Brown

Ramona Brown

Betty Jo Brummett





John Bryant



Johnny Bullock



Lois Bullock



Robert Burks



Eufemio Cabalo



Phyllis Campbell

Carol Cantrell

Peggy Capps

Marilyn Chapman

Darlene Closser





Arnold Couch



Rebecca Crittenden



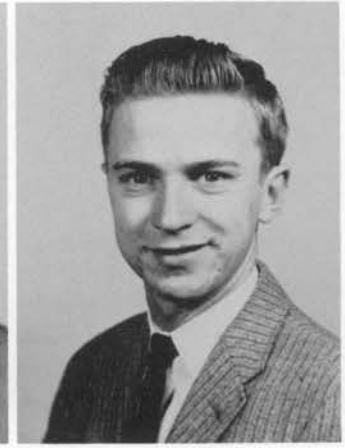
Rebecca Culpepper



Martha Devine



William Driver



William Dustin

Aristeia Fontes

Daniel Francomano

Carole Franklin

Harry Fujita





Saiki Fujita



Virginia Gallman



Martha Gamboa



Barbara Graham



Erma Jean Griffin



David Grogg

Robert Hanson

Kenneth Henderson

Janet Huff

Helen Hurt





Ruth Jennings



Frank Johnson



Bob Justice



Teresa Kelly



Marlyn Kurtz



Judy Lahde

Joyce Larcom

Grace Linscott

Loraye Long

Shirley Long





Rita Martz



Dorothy Maxwell



Neva Kay Milliman



Richard Mitzelfelt



David Muth



Joseph McAllister

Rosellia McColpin

Gladys Ocompo

Kieko Okada

Carmen Olivencia





Juny Perez



Ruth Perrales



Barbara Pletcher



Janet Powell



Janice Quarnstrom



Ayler Rodriguez

Elizabeth Rodriguez

Rene Rodriguez

Alexander Rojas

Pauline Romo





Phil Sanford



Marvin Schmidt



Pat Scott



Cletis Seamons



Judy Sellers



Elmer Shipowick

Ann Shrader

Sara Silva

Walter Silva

Mary Silvers





Carol Smith



Juanita Sossong



George Sullivan



Darlene Syvertson



Terry Sweeny



Carol Taylor

Carlota Torres

John Treu

Lloyd Trivett

John Villeneuve





Rose Walden



Sara Jo Wallace



Theresa Walters



Wanda Wash



Billy White



Jimmie White

Ruth Whitlow

Julius Williams

Carol Winton

Mary Wisner





Keiko Yoshimura



Mary Ellen Young



Sandra Young



Raymond Yu

**SPECIAL
STUDENTS**



Grace Barker



Oliver Gunter



Gordon Roberts

Gladys Rollins

Tania Schmukler

Norma Umali

Dwayne Woodson





clubs and organizations



A.S.M.C. Executive Committee

President. Tom Bates
Vice-President. Joe Fields
Secretary. Alice Surdahl
Treasurer. Myrna Moore
Parliamentarian. Dennis Randall
Sponsor. Mr. Homer Lynd



A.S.M.C. Student Teacher Council

VOTING MEMBERS



Δ N Z

*President.*Juanita Lanham
*Vice-President.*Maloa Alexander
*Secretary.*Correne Bunch
*Treasurer.*Norma Forrester
*Parliamentarian.*Mary Lou Ward
*Pastor.*Shirley Zinkie
*Sponsor.*Mrs. Temples



Φ M Σ

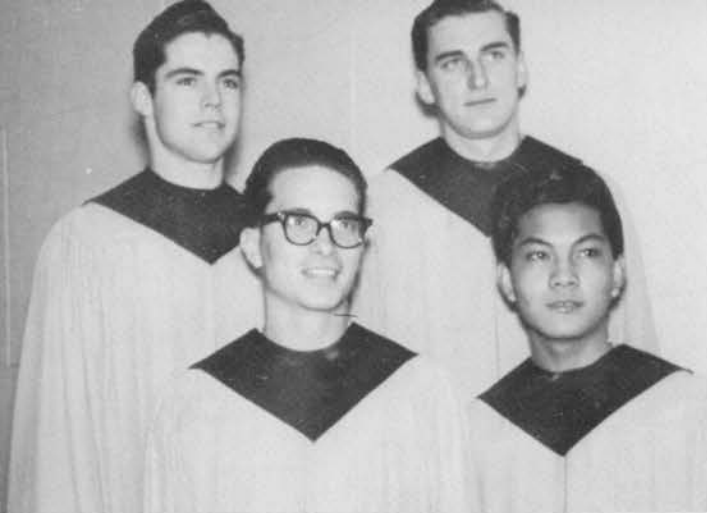
President. Terry Sweeny
Vice-President. Gene Wheeler
Sec-Treasurer. Johnny Bullock
Parliamentarian. Eddie Barton
Pastor. Joe Fields
Sponsor. Mr. Fragola

CHOIR





BAND



Male Quartet



Ladies Trio



Trumpet Trio

Brass Choir





CUMBERLAND ECHOES STAFF

MADISONIAN STAFF





NATURE CLUB



NURSING CLUB



PHYSICAL THERAPY
CLUB



Teachers Of Tomorrow Club

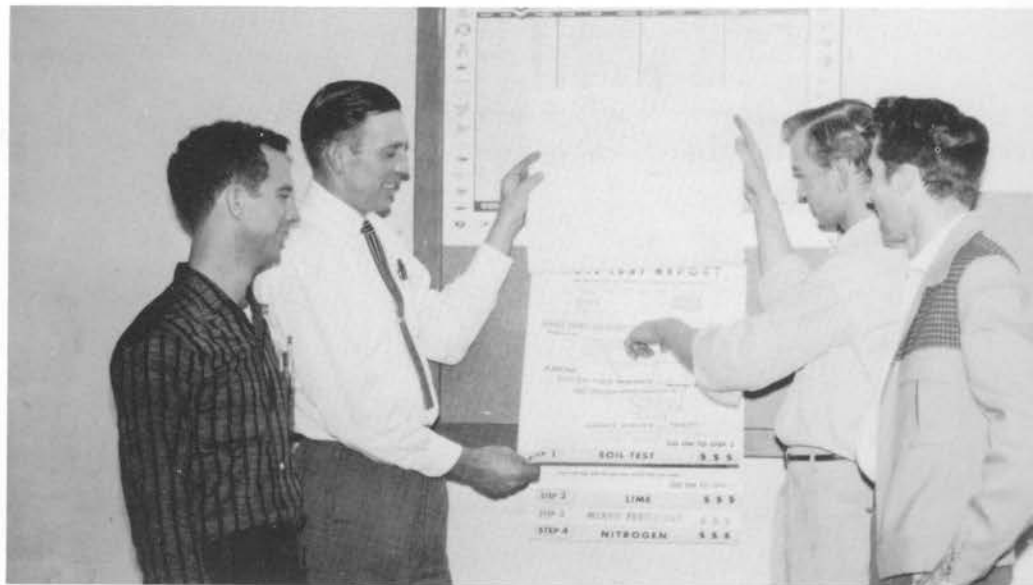
Temperance Club





A.S.M.C. COMMITTEE
CHAIRMEN AND
MEMBERS

AGRICULTURE CLUB



BUSINESS AND
SECRETARIAL
SCIENCE CLUB

**SOME SUCCESSFUL
ALUMNI**

Robert Erickson
George Schultz
Wm. Cushman
Doyle Martin
Bernard Bowen
Forrest Pride



**MEDICAL RECORDS
CLUB**

**MICRO GAMMA
CLUB**





M.V. SOCIETY OFFICERS



SUNSHINE BAND

EVANGELISTIC EFFORT
FATHERLAND STREET CHURCH



ACTIVITIES

Sack-races at the
autumn picnic.
Solemn faces attending
club meetings---
Activity.
Laughing voices, on a
festive hay-ride.



All rejoice, at the
downy softness of the
snow-----Activity.
Anticipation of week-end
leaves.
Jubilation of couples at
annual banquets-----
Activity.







OUR PASTOR
Elder Hubert Anderson and Family

Elder Robert Pierson
ASSISTANT PASTOR



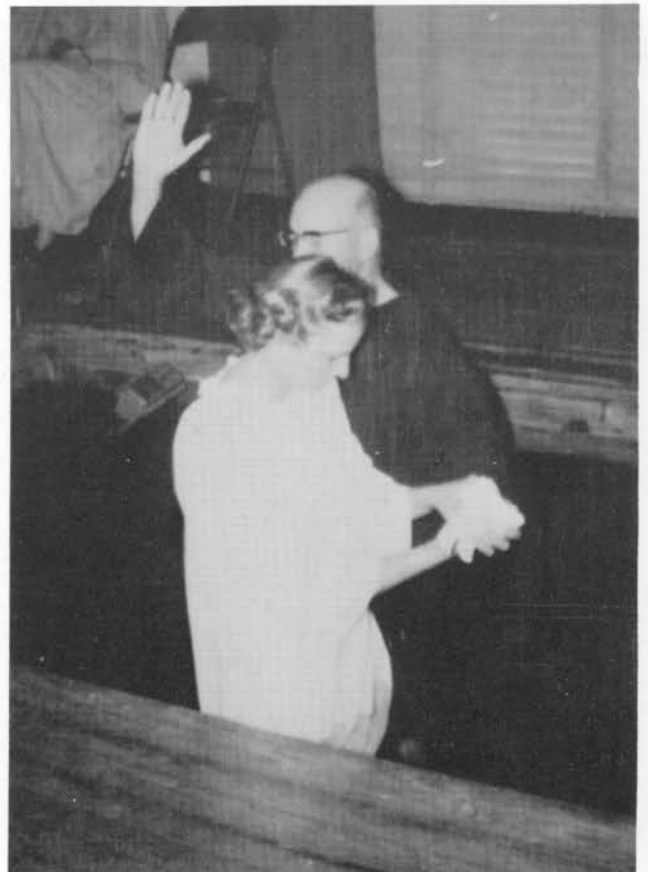
Elder Oscar Hegstad
CHAPLAIN





Elder Wallenkamp
FALL WEEK OF PRAYER

RESULT---
BAPTISM





Miss Student Nurse



Julia and Tom Adams

Marilyn and Dave Gunderson



Teresa and Denson Hudgens

Virginia and Albert Isom



Peggy and Don Moore

Ruby and Eugene Post





Marie and Bill Sandborn



Esther and Pat Scott



Virginia and Gene Sellars

Sarah and Walter Silva



Elisabeth and Jerry Williams



SNAPSHOTS







academy



THEIR LETTERS MAY BE BACKWARDS; BUT FORWARD IS THEIR GOAL.

For the fulfillment of your purpose in setting before our student body high standards, loyal leadership, and good sportsmanship in our activities; for your spirit of service to both students and faculty; we, the 1960 MCA Student Forum, dedicate the academy section of the Cumberland Echoes to you

OUR SENIORS



To the students of Madison College Academy, I say that it is a great privilege to be living in this hour of the earth's history.

We are living in a time when nothing less than the very best is expected of us.

So in view of this fact, I would like to admonish each one of you in the very dawn of your adult life, to take the opportunity of preparing yourselves for the great future that the Lord of this universe has taken time to plan for your happiness, not only in this life, but for the one that will follow in the earth made new.

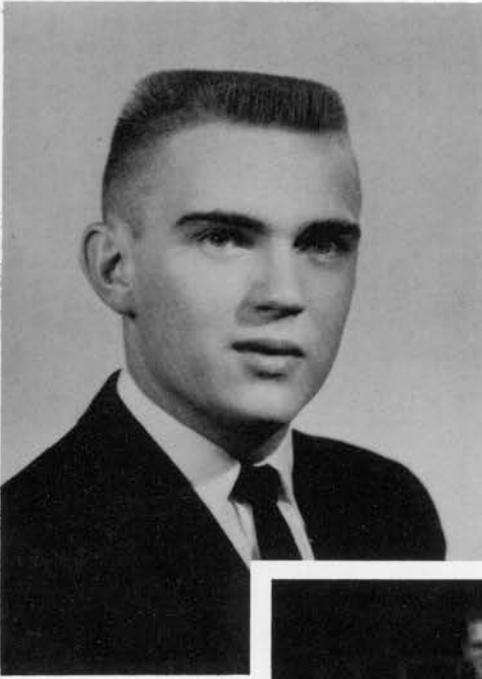
Your principal,

L. L. DICKMAN

Academy

Student

Forum

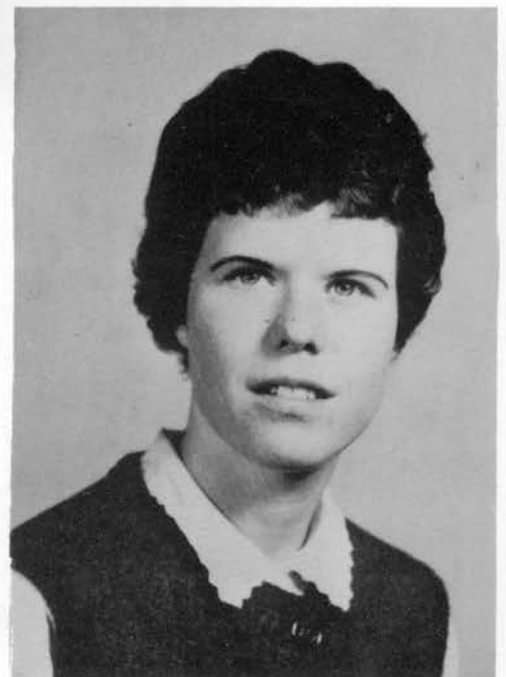


EUGENE WEDEL
President



*Row 1: Judy Ball, Secretary; Eugene Wedel, President; Mary Lou Sandborn, Vice President.
Row 2: David Martin, Paston; Mr. Dickman, Sponsor; Junior Scoggins, Sgt. at Arms.*

MARILYN SANDBORN
Vice President



CLASSES



Seniors



Juniors

Sophomores



Freshmen





Louis Dickman
Sponsor

Mrs. Jerry Dickman
Sponsor

PRESIDENT
Bill Bass
North Carolina
Ambition: Civil Engineer

VICE PRESIDENT
Carol June Martin
Washington
Ambition: Social Worker

Seniors

SECRETARY
Patricia Batchelor
Virginia
Ambition: Teacher

TREASURER
Stella Stark Sullivan
Tennessee
Ambition: Doctor



PASTOR
William Wilson
Maryland
Ambition: Doctor

SGT.-AT-ARMS
Eugene Wedel
Michigan
Ambition: Dietitian

Andrea Barger
Tennessee
Ambition: Doctor

Toni Bobbs
Tennessee
Ambition: Nurse



Carol Bradley
Colorado
Ambition: Elementary Teacher

Carolyn Combs
Tennessee
Ambition: Teacher



Frederec Cothren
Tennessee
Ambition: Surgeon

Joe Crossnoe
Tennessee
Ambition: Nurse

Carol Cruzen
Tennessee
Ambition: Medical Record Secretary

Sue Cuthbert
Florida





Laura De Jesus
Puerto Rico
Ambition: Nurse

Linda Doll
Illinois
Ambition: Medical Records

Bill Eddings
Kentucky
Ambition: Accountant

Darrell Eversoll
Tennessee
Ambition: Physics Teacher



Rowena Felt
Kentucky
Ambition: Housewife

Nicolas Garces
New York
Ambition: Anesthetist



Ruth Gill
Arkansas
Ambition: Nurse

Hazel Griffin
Missouri
Ambition: Telephone Operator

Gloria Hayes
Tennessee
Ambition: Bookkeeper

Shirley Hayes
Tennessee



Kathleen Lewis
Tennessee
Ambition: Teacher

Rosalene McColpin
Tennessee
Ambition: Teacher



Elba Melendez
Pureto Rico
Ambition: Nurse

Leonard Moon
Tennessee
Ambition: Surgeon

Melba Morgan
Texas
Ambition: Teacher

Diane Moyers
Georgia
Ambition: Nurse





William Nickless
Tennessee
Ambition: Evangelism Ministry

Marie Pownall
California
Ambition: Nurse

Marilyn Sandborn
Tennessee
Ambition: Medical Records Secretary

Junior Scoggins
Arkansas



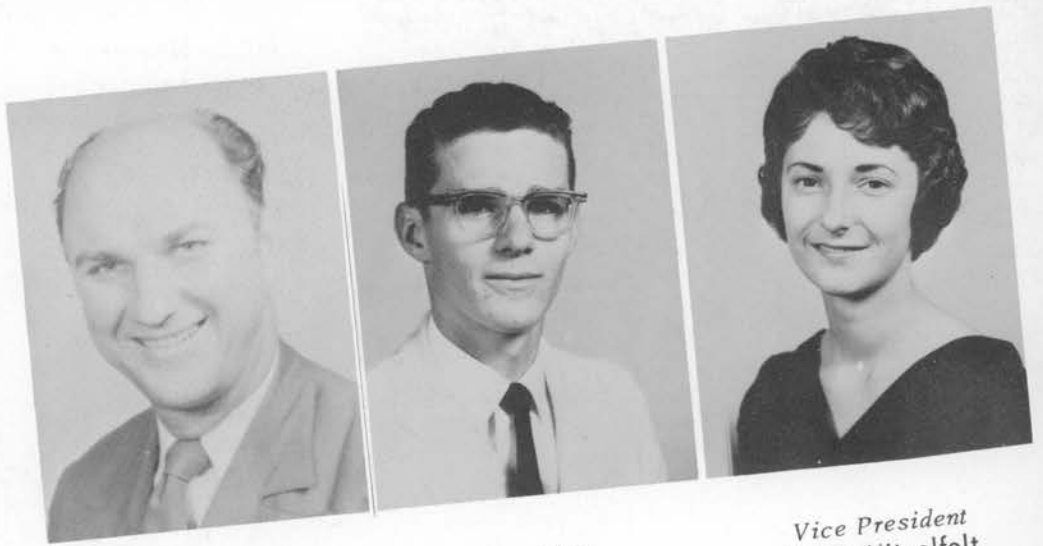
Paul Smetana
Florida

Paul Sullivan
Tennessee
Ambition: X-Ray and Lab. Technician



David White
Florida
Ambition: Anesthetist

Tommy Young
Tennessee
Ambition: Anesthetist



Sponsor
Worth Lowder

President
David Martin

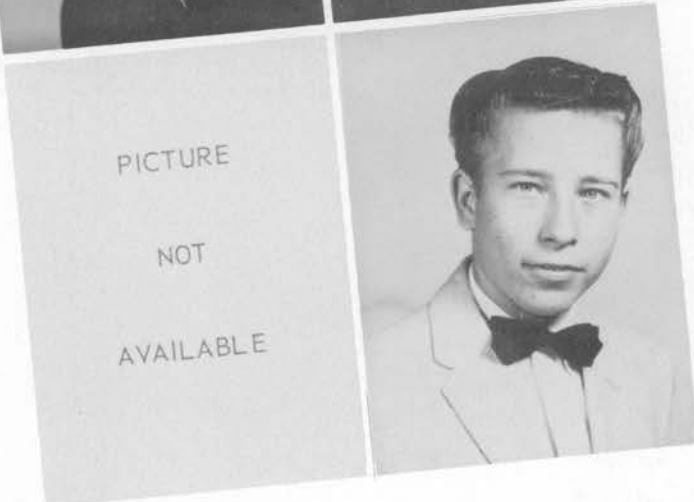
Vice President
Sylvia Mitzelfelt

Juniors



Secretary
Judy Ball

Treasurer
Eva Campbell



PICTURE

NOT

AVAILABLE

Pastor
Carl Adkins

Sgt.-at-Arms
Ronny Sullivan



Joan Aitken



John Aitken



Evelyn Barham



Arlene Blackburn



Priscilla Bramble



Edith Carlson



Robert Florida



Lorene Ford

Walter Hancock

Clinton Hooper



Barry Jonstandt

Claudia Kunau



Mike McIntosh

Teresa Patterson

Jean Pitts

Lona Pownall



Laneta Scoggins

Jonathan Seward



Eddie Shelton

Mary Sommerville



Johnny Sumner

Eddie Thornton

Reba Vaughn

Sharon Williamson





Arnold Andruss



Ralph Begley



David Blankenhorn



Robert Bowes

Sophomores



Jackie Cothren



Joel Crow



Jean Crossnoe

Carole Culpepper

Marcella Duran

Eva Gill

Margery Jenkins





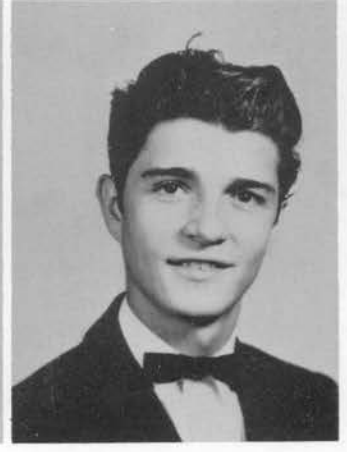
Mike Jenkins



Billy Johnson



Paul Johnson



Fred Schwarz



Wanda Scoggins



Johnny Sellers



George Smotherman

Charlotte Stark

Janice Thomson

Eddie Triplet

Howard Zeigler



F
r
e
s
h
m
e
n

Marietta Andrus



Henry Bendall

Douglas Brown



James Combs

John Crowder



Gerald Cruzen

Patricia Dent



Lawrence Evans

Betty Green



Virginia Karnatz



Timothy Kubecka

Juanita Kunau



Donna Mays

Louise Rosser



Jack Saunders

Loretta Sullivan



Wynn Sullivan

Patsy Temples



Tommy Wedel

Linda Wood



Clubs and Activities



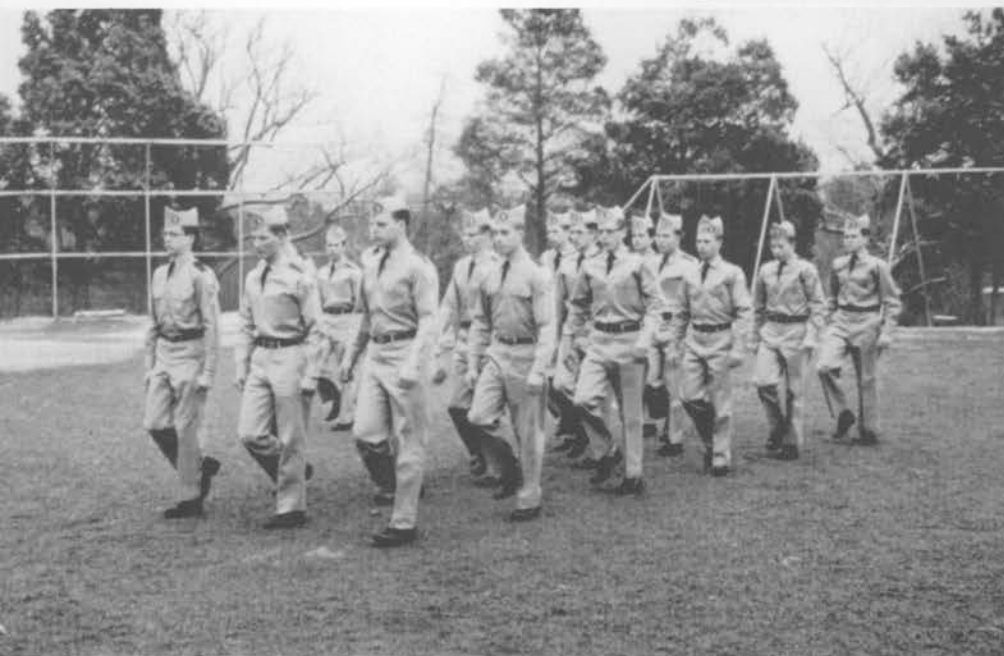


Representatives of the
SPRING FESTIVAL
OF MUSIC

VILLAGE CLUB
OFFICERS



TEACHERS OF TOMORROW
CLUB



MEDICAL
CADET
CORP





CUMBERLAND ECHOES STAFF

Hazel Griffin, *Editor*

Priscilla Bramble, *Asst. Editor*

Tom Young, *Business Manager.*

MADISONIAN STAFF

Janice Thomson; Miss Elizabeth Cowdrick, *Sponsor*; Sylvia Mitzelfelt; Linda Wood; Priscilla Bramble.





ACADEMY CHOIR

Patricia Mitzelfelt-Silver, *Director*
Mary Lou Sullins, *Pianist*



VILLAGE GIRLS' TRIO



GIRLS' ENSEMBLE

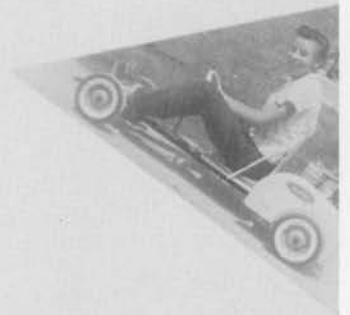


FEMININE
FROLICS





MASCULINE MASQUERADES





YEA SENIORS











Eighth Grade

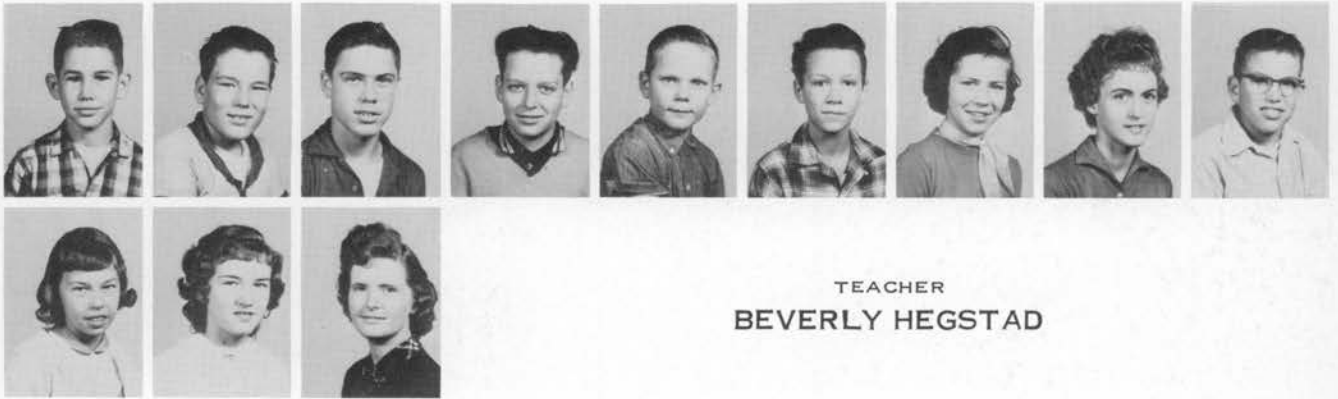


TEACHER
WINSTON FERRIS

Seventh Grade

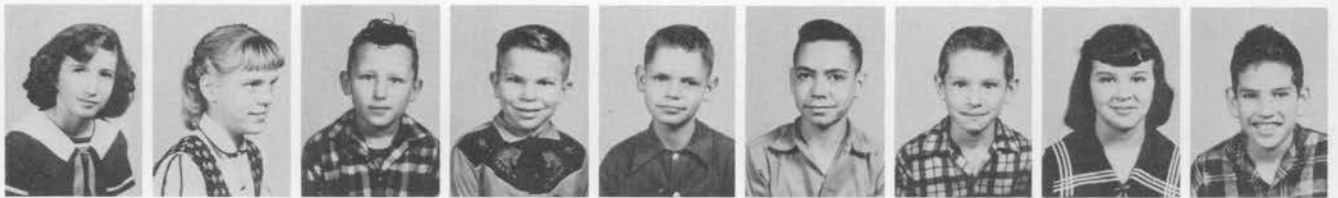


Sixth Grade



TEACHER
BEVERLY HEGSTAD

Fifth Grade



Fourth Grade



TEACHER



VESTA LESTER

Third Grade



Second Grade



First Grade



Pre-School



TEACHERS

MRS. C. McDONALD AND MRS. KELLY

FROM THE

"ATHENS OF THE SOUTH"

WE INVITE YOU



TO THE FRIENDLY FIELD OF OPPORTUNITY
SCHOLARSHIPS AVAILABLE

FOR LITERATURE MINISTRY
TEACHING EVANGELISM

OUR NEED

- DOCTORS
- NURSES
- LITERATURE EVANGELISTS
- TEACHER EVANGELISTS
- OFFICE SECRETARIES

KENTUCKY-TENNESSEE CONFERENCE

3208 WEST END AVENUE

NASHVILLE, TENNESSEE

E. L. MARLEY, PRESIDENT

R. W. DUNN, TREASURER

W. E. DOPP, M. V. SECRETARY

MYRON J. HARVEY

LOUIE WHITTEN

DIRECTOR OF PUBLIC RELATIONS

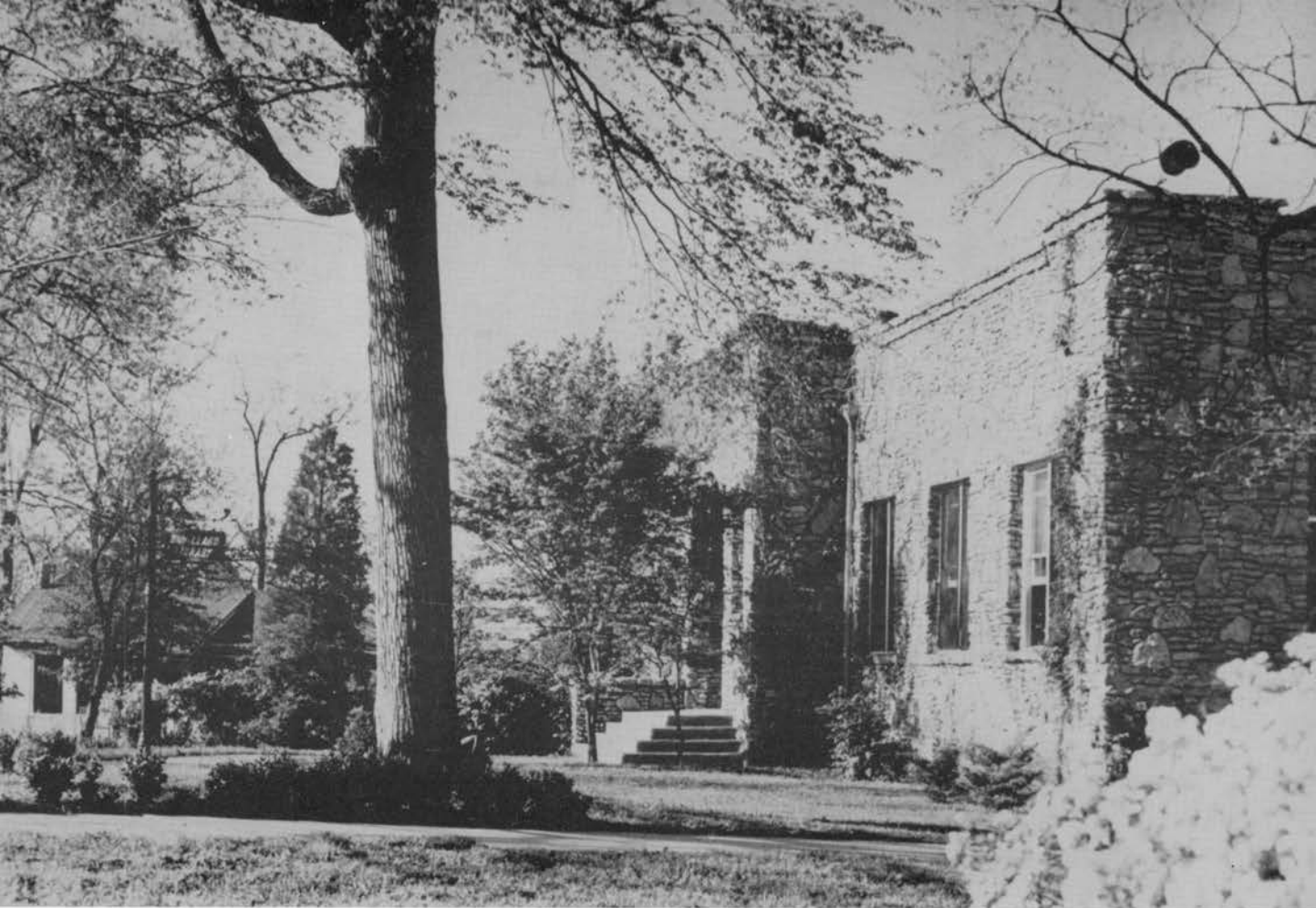
PUBLISHING DEPARTMENT

F. W. FOSTER, EDUCATION SECRETARY

EUGENE ZUMBAUM, MGR. BOOK AND

W. C. HATCH, H. M. AND S. S. DEPT.

BIBLE HOUSE



DRUILLARD HALL

MADISON COLLEGE

"THE CLASS OF EDUCATION GIVEN AT THE MADISON SCHOOL IS SUCH AS WILL BE ACCOUNTED A TREASURE OF GREAT VALUE BY THOSE WHO TAKE UP MISSIONARY WORK IN FOREIGN FIELDS. IF MANY MORE IN OTHER SCHOOLS WERE RECEIVING A SIMILAR TRAINING, WE AS A PEOPLE WOULD BE A SPECTACLE TO THE WORLD, TO ANGELS, AND TO MEN. THE MESSAGE WOULD BE QUICKLY CARRIED TO EVERY COUNTRY, AND SOULS NOW IN DARKNESS WOULD BE BROUGHT TO THE LIGHT."

Mrs. E. G. WHITE

BACHELOR OF SCIENCE DEGREE IN AREAS OF.

AGRICULTURE

SCIENCE

EDUCATION

HOUSEHOLD ARTS

MUSIC

INDUSTRIAL EDUCATION

NURSING

MEDICAL TECHNOLOGY

NUTRITION

RELIGIOUS EDUCATION

PROFESSIONAL TRAINING IN X-RAY, ANESTHESIOLOGY, PRACTICAL PHYSICAL THERAPY, MEDICAL LIBRARIAN.

THE LAYMAN'S SCHOOL--TRAINING FOR THE CHALLENGING FRONTIER OF PIONEER EXPERIENCE IN SELF-SUPPORTING WORK.

OPPORTUNITY TO EARN WHILE YOU LEARN.

..... FOR INFORMATION, WRITE TO THE DEAN

MADISON COLLEGE

MADISON COLLEGE

TENNESSEE



MADISON SQUARE SHOPPING CENTER

- A CONVENIENT ONE STOP SHOPPING CENTER.
- AIR-CONDITIONED FOR YEAR AROUND SHOPPING COMFORT.
- NO TRAFFIC HEADACHES.
- PLENTY OF FREE PARKING.

COMPLIMENTS OF

CHESTER'S
FAMILY BOOTERIE
McCLURE'S
TENNESSEE TOURIST
LEVY'S
NATIONAL'S FOOD STORES
COMMERCE UNION BANK
BARBER SHOP
EDWARD'S GIFT SHOP
CHILD'S TOGGERY
WOOLWORTH'S COMPANY

JONES PET SHOP
NASHVILLE GAS COMPANY
MODEL SHOE REPAIR
PENNEY'S DEPARTMENT STORE
CEIGLER'S
TOM McANN
KAY'S JEWELRY COMPANY
WALGREEN'S DRUG COMPANY
THREE SISTERS
KROGER'S

Needed:

- MINISTERS
- LITERATURE EVANGELISTS
- TEACHERS
- PHYSICIANS
- DENTISTS
- NURSES
- SECRETARIES
- BUSINESS LEADERS
- WRITERS
- TECHNICIANS
- SPECIALISTS IN
NUMEROUS VOCATIONS

Needed:

ADVENTIST YOUTH CONSECRATED
AND DEDICATED - AND EDUCATED
- TO MEET THE CHALLENGE OF
THE HOUR!

A Tremendous Future . . .

. . . with Unexcelled Opportunities

TO EVERY MADISON COLLEGE STUDENT IS OFFERED A TREMENDOUS FUTURE WITH UNEXCELLED OPPORTUNITIES—RIGHT HERE IN THE SOUTH. THE WORK OF GOD NEEDS YOU IN ANY ONE OF MANY CAPACITIES. WE URGE YOU TO SET YOUR SIGHTS HIGH SO THAT WITH A BALANCED PERSPECTIVE YOU CAN DO THE WORK GOD WANTS YOU TO DO IN THIS UNPRECEDENTED PERIOD OF THE WORLD'S HISTORY.

Southern Union Conference of Seventh-day Adventists

437 EAST PONCE DE LEON AVENUE

(P. O. BOX 849)

DECATUR, GEORGIA

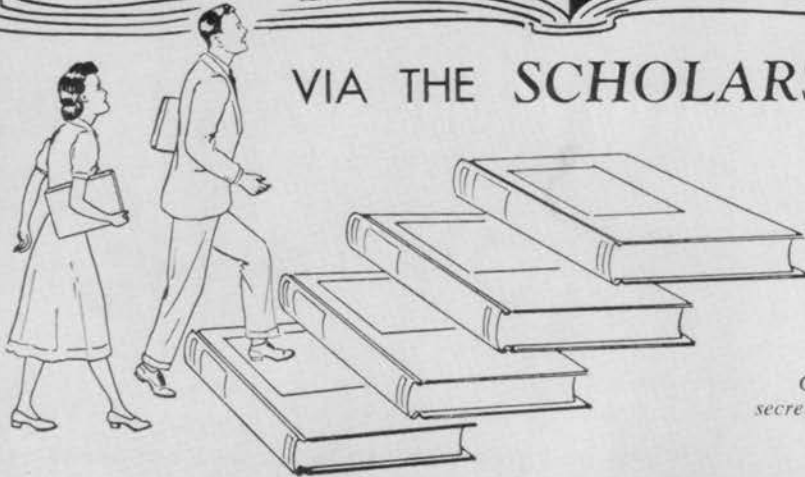
REACH

Graduation



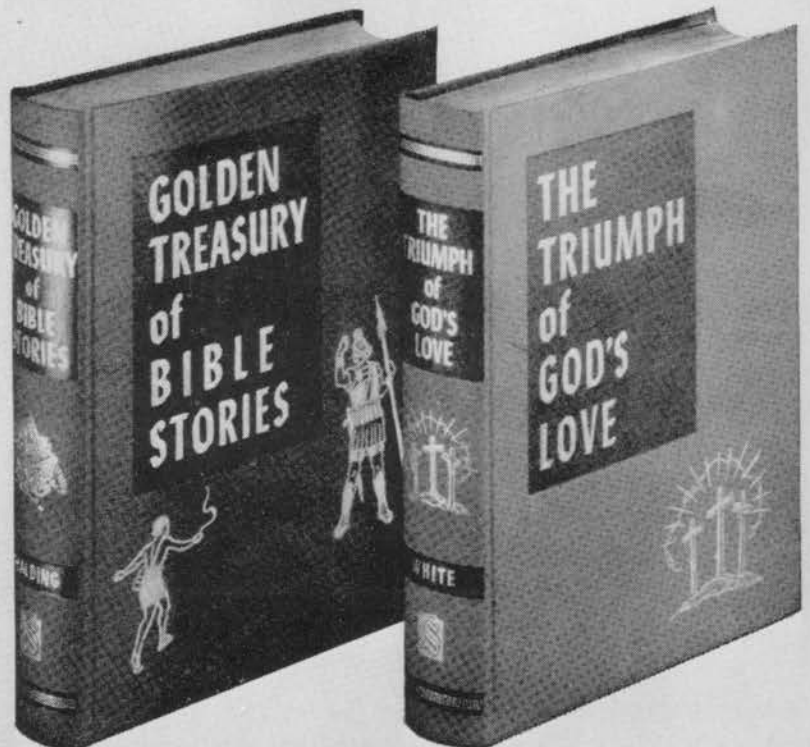
H. M. Lambert

VIA THE SCHOLARSHIP PLAN



Contact your publishing department secretary immediately for definite plans.

Don't let finances worry you next school term—get a scholarship to care for your financial obligations. Sell *Golden Treasury of Bible Stories* and *The Triumph of God's Love*—the books that practically sell themselves. Do your customers an infinite favor by bringing to them these incomparable life-giving volumes.



SOUTHERN PUBLISHING ASSOCIATION, BOX 59, NASHVILLE 2, TENNESSEE

24 HOUR NURSING SERVICE

SPECIAL DIETS

SPECIAL CARE

MEMBER OF
AMERICAN NURSING
HOME ASSOCIATION

MEMBER OF
TENNESSEE STATE ASSOCIATION
OF NURSING HOMES

CENTENNIAL
NURSING HOME

MID-STATE
NURSING HOME



PEGGY DILLARD JONES, R.N., B.S., NURSING SUPERVISOR

MRS. CORA DILLARD, OWNER-ADMINISTRATOR, L.P.N.

BRoadway 7-2061

TWO CONVENIENT LOCATIONS

CENTENNIAL
NURSING HOME
AIR CONDITIONED
318 - 23RD AVE., N.

MID-STATE
NURSING HOME
2205 STATE STREET

NASHVILLE, TENNESSEE



WOMEN'S DORMITORY BUILDING
COLLEGEDALE, TENNESSEE

BIANCULLI & PALM - ARCHITECTS
CHATTANOOGA, TENNESSEE



CA

ABOVE IS THE ARCHITECT'S SKETCH OF THE WOMEN'S NEW DORMITORY NOW
UNDER CONSTRUCTION AT SOUTHERN MISSIONARY COLLEGE

SOUTHERN MISSIONARY COLLEGE IS NOTED FOR
ITS SPIRITUAL ATMOSPHERE

WHERE FRIENDLINESS PREVAILS
AND SOUTHERN HOSPITALITY REIGNS

- FULL ACCREDITATION
- LIBERAL ARTS COURSES
- COLLEGIATE PROGRAM IN NURSING
- \$330,000 STUDENT LABOR LAST YEAR
- PRE-PROFESSIONAL COURSES
- THE COLLEGE OF STANDARDS

FOR INFORMATION
WRITE: SECRETARY OF ADMISSIONS

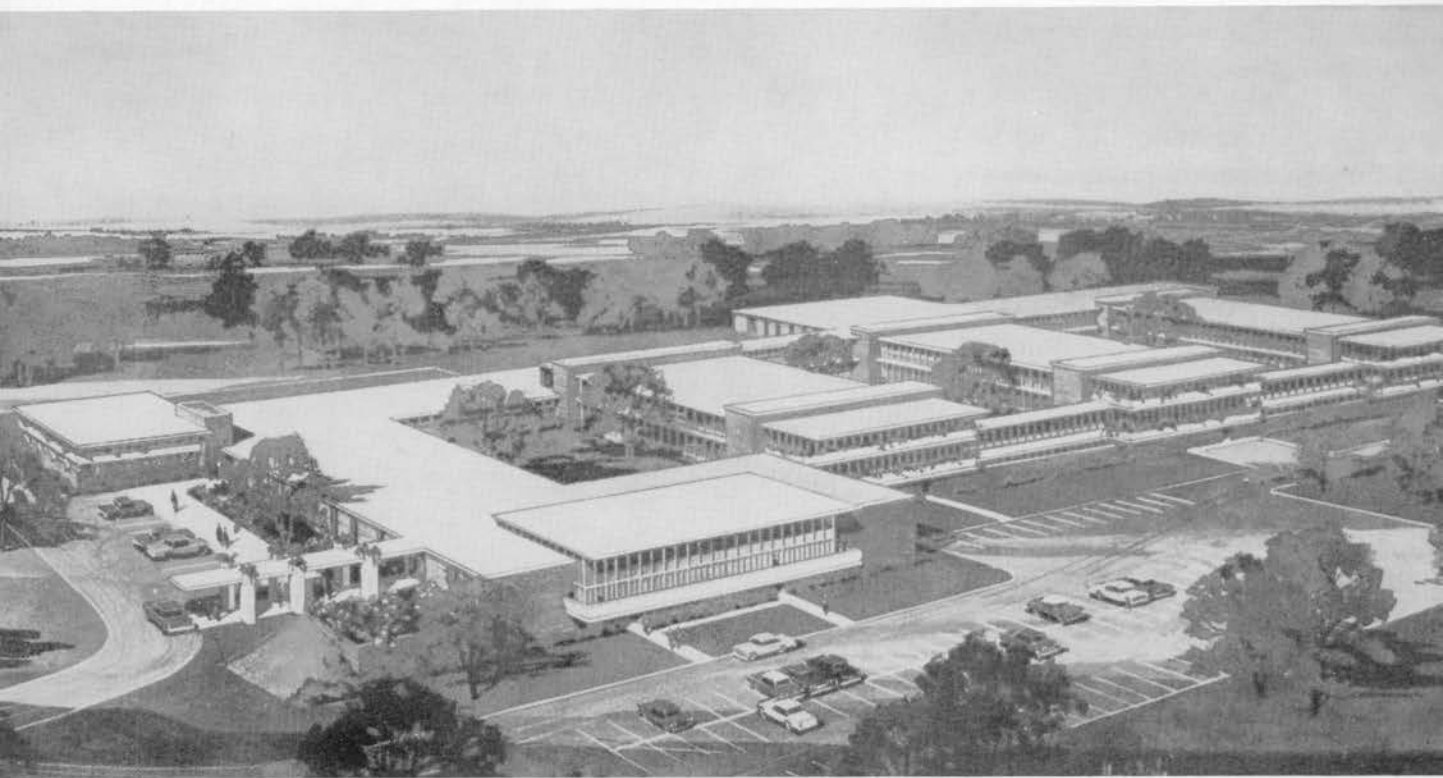
SOUTHERN MISSIONARY COLLEGE

COLLEGEDALE,

TENNESSEE

MADISON SANITARIUM-HOSPITAL

PROPOSED LONG RANGE DEVELOPMENT



THIS ARCHITECT'S SKETCH SHOWS THE NINE-UNIT, 240 BED HOSPITAL, OF CONCRETE AND GLASS CONSTRUCTION, WHICH WILL ULTIMATELY REPLACE THE PRESENT SANITARIUM AND HOSPITAL PLANT. COMPLETE PLANS WILL PLACE THE NEW HOSPITAL IN THE RANKS OF THE STATE'S BEST INSTITUTIONS.

SICKNESS DEMANDS THAT
GUESSWORK BE RULED OUT

MADISON SANITARIUM AND HOSPITAL

OFFERS YOU . . .

- TOTAL CARE FOR THE TOTAL PATIENT
- COMPLETE MEDICAL STAFF
- A BEAUTIFUL LOCATION IN THE OLD SOUTH

FOR FURTHER INFORMATION WRITE TO
MADISON SANITARIUM AND HOSPITAL

MADISON,

TENNESSEE



HIGH MAN ON ANY

TOTEM POLE!

There is always room at the top . . . for the graduate in business or engineering who wishes to practice his profession under circumstances not ordinarily available.

Just as ACE has achieved great prominence as one of the industry's fast growing precision tool manufacturers, so you have the prospect of arriving at the top with an exceptionally unique and excellent firm.

Now is the time to consider a future with this traditionally Christian organization. International in scope, diversified in operation, it is tuned to the vast opportunities which characterize this space age decade of the 1960's.



An inquiry sent to George C. Beck, Vice-President will bring complete information regarding job opportunities throughout the U.S.A. Write today.

ACE DRILL BUSHING CO., INC.
5407 Fountain Ave., Los Angeles 29, Calif.

PHOTO SUPPLIES

FOR PROFESSIONAL & AMATEUR

featuring the following:

LEICA
ZEISS IKON
EASTMAN KODAK
DUPONT
ANSCO
VIEW MASTER

MINOX
DASSONVILLE
VOIGHTLANDER
ROLLEIFLEX
DE JUR-AMSCO
ARGUS

BELL AND HOWELL
GRAFLEX
LINHOF
NIKON
HEILAND
KALART

McGINNIS
DRUG CO.

3006 GALLATIN ROAD AT TRINITY LANE
PHONE NASHVILLE CO 2-5757



NASHVILLE, TENNESSEE

PHONE ALPINE 6-4655



Madison College,

Madison, Tennessee

WE CAN

SAVE

UP TO 20 PER CENT

ON YOUR FIRE AND AUTO INSURANCE

AND

HOMEOWNERS' POLICY

SAM KIRKPATRICK

1922 CHURCH STREET

AL 5-5738

COMPLIMENTS OF

MADISON FOODS, INC.

"FINER FOODS IS OUR UTMOST CONCERN"

MADISON COLLEGE,

MADISON, TENNESSEE

"CONGRATULATIONS!

SENIORS — 1960"

ATLANTIC UNION CONFERENCE

P.O. Box 458

SOUTH LANCASTER,

MASSACHUSETTS

PATRONIZE OUR ADVERTISERS

Nashville Surgical Supply Company

1911 CHURCH STREET

NASHVILLE, TENNESSEE

COMPLETE LINE OF HOSPITAL AND DOCTOR SUPPLIES

"THE LORD HAS APPOINTED THE YOUTH TO BE HIS HELPING HAND."

-- TESTIMONIES, VOL. 7, P. 64. --

A SCHOLARSHIP FOR YOU!

LET "THESE TIMES" HELP YOU WITH YOUR SCHOOL EXPENSE. PLACE ONLY SIXTY SINGLE COPIES OR FIVE ONE-YEAR SUBSCRIPTIONS A DAY EACH WEEK FOR TEN WEEKS AND RETURN TO SCHOOL WITH MOST OF YOUR EXPENSES PAID. RESPOND TO THE CALL. BE GOD'S HELPING HAND. QUALIFY FOR A SCHOLARSHIP AND WIN SOULS THROUGH THE "THESE TIMES" MINISTRY.

ASK YOUR PUBLISHING DEPARTMENT SECRETARY FOR COMPLETE INFORMATION.

"THE LORD CALLS UPON OUR YOUTH TO LABOR AS CANVASSERS."

COLPORTEUR MINISTRY, P. 19.

MADISON'S

MOST CONSIDERATE LOAN SERVICE

FOR FRIENDLY SERVICE - CALL - MR. GARVEY

TW 5-3317

MADISON FINANCE AND THRIFT COMPANY

MADISON, 617 GALLATIN ROAD - NEAR NEELY'S BEND ROAD TENNESSEE

JOE FORMOSA AND SONS

FRESH FOODS AND VEGETABLES

PHONE CH 2-6456

714 FOURTH AVENUE, NORTH

NASHVILLE, TENNESSEE

KORNMAN'S DEPARTMENT STORE

UNIFORMS AND SHOES FOR

LADIES AND MEN

MADISON, TENNESSEE

CONGRATULATIONS TO THE SENIOR CLASS OF 1960

J.C. Dimock Foods

Box 4364

TAKOMA PARK

WASHINGTON 12, D.C.

SPEED QUEEN LAUNDRY

909 GALLATIN ROAD
MADISON, TENNESSEE

SELF SERVICE — COIN OPERATED
WASH AND DRY

OPEN 24 HOURS

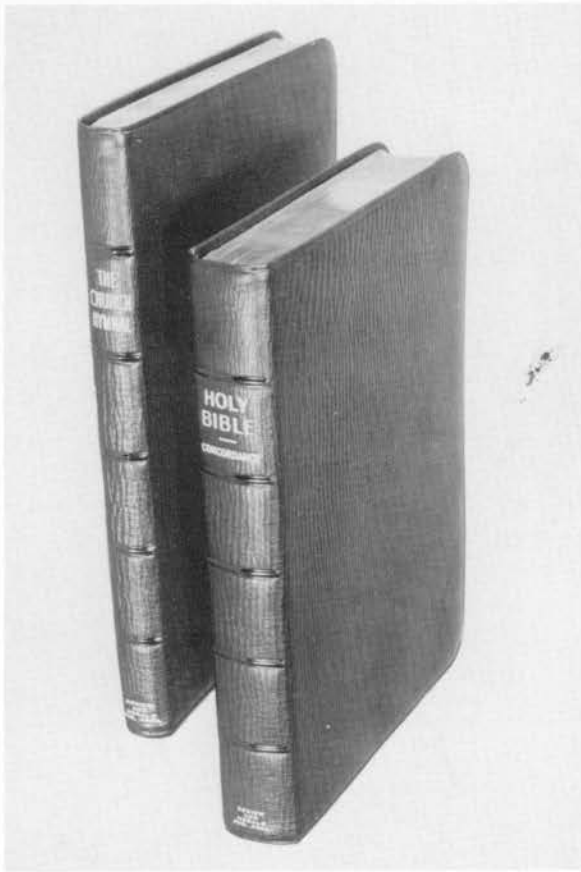
THEO. TAFEL CO., INC.

ESTABLISHED 1889

PHYSICIANS AND HOSPITAL SUPPLIES

153 4TH AVENUE, NORTH

NASHVILLE, TENNESSEE



THE ULTIMATE IN GRADUATION GIFTS

ONE YOU WILL BE PROUD TO GIVE
NONE MORE THRILLING TO RECEIVE

THIS BEAUTIFUL SET IS BOUND IN A LOVELY NATURAL MOROCCO THAT WILL GIVE YEARS OF SERVICE AND A PRIDE OF OWNERSHIP FOUND ONLY IN FINE LEATHERS. THE BIBLE IS A CONCORDANCE EDITION EXACTLY THE SAME AS OXFORD 038X. INDIVIDUALLY BOXED.

THE O39X BIBLE-HYMNAL SET
\$24.95

ORDER FROM YOUR
BOOK AND BIBLE HOUSE

REVIEW AND HERALD
PUBLISHING ASSOCIATION
WASHINGTON 12, D.C.

ROBERT ORR & COMPANY

WHOLESALE GROCERS

COFFEE ROASTERS

PHONE AL 5-8333
901 SIXTH AVENUE, NORTH

NASHVILLE,

TENNESSEE

MADISON COLLEGE STORE

HEALTH FOODS

SCHOOL SUPPLIES

MILK — EGGS — FRUIT — VEGETABLES

FRESH FROM OUR FARM

RIVERSIDE SANITARIUM & HOSPITAL

800 YOUNG'S LANE
NASHVILLE 7, TENNESSEE

ESTABLISHED - 1947

HOW IS YOUR HEALTH?

THE RIVERSIDE SANITARIUM AND HOSPITAL OFFERS A UNIQUE SERVICE TO HEALTH SEEKERS. BEAUTIFUL, SPACIOUS GROUNDS AND SURROUNDINGS, COMFORTABLE, WELL-FURNISHED ROOMS, WELL-BALANCED MEALS, CONSCIENTIOUS AND WELL-TRAINED PERSONNEL, SOLARIUM AND LOUNGE FOR PATIENTS, AND UP-TO-DATE EQUIPMENT FOR CARE OF ALL ORDINARY DISEASES AND AILMENTS MAKE RIVERSIDE IDEAL FOR RECUPERATION.

THE HOSPITAL HAS MODERN FACILITIES FOR DIAGNOSIS AND TREATMENT OF ALL SURGICAL, MEDICAL, MATERNITY, AND PEDIATRIC CONDITIONS.

THE SANITARIUM PROVIDES THE BATTLE CREEK TREATMENTS CONSISTING OF PHYSIOTHERAPY, SCIENTIFIC DIET AND REST.

THE RIVERSIDE SANITARIUM AND HOSPITAL IS APPROVED BY THE AMERICAN MEDICAL ASSOCIATION, AND IS A MEMBER OF THE AMERICAN HOSPITAL ASSOCIATION AND BLUE CROSS PLAN OF HOSPITALIZATION. NO MENTAL OR CONTAGIOUS DISEASES ARE TREATED.

SEND FOR INFORMATION

TENNESSEE WHOLESALE DRUG COMPANY

160 SECOND AVENUE, NORTH PHONE AL 5-6633 NASHVILLE, TENNESSEE
YOUR COMPLETE PHARMACEUTICAL SUPPLIER WITH TWINS



FOR YOUR EMERGENCIES

AN IMPORTANT FACTOR IN THE VITAL SERVICE OF—
YOUR HOSPITAL YOUR DOCTOR YOUR PHARMACIST

Always Look To Madison College Laundry

WHERE
"BUNDLES OF SATISFACTION"
ARE CONTINUALLY BEING PRODUCED.

TEN PER CENT DISCOUNT FOR DRY CLEANING AND LAUNDRY TO STUDENTS
AND CAMPUS EMPLOYEES.

TELEPHONE TW 5-5461, EXT. 257

MILES ROY COON, SUPERVISOR

CONGRATULATIONS!

GRADUATES OF 1960

THE CUMBERLAND ECHOES STAFF 1960



TYPICAL CAREERS AT HINSDALE

ACCOUNTANT
ADMITTING CLERK
BACTERIOLOGY TECHNICIAN
BAKER
BLOOD BANK TECHNICIAN
CASHIER
COOK
DIETITIAN
ELECTROENCEPHALOGRAPH TECHNICIAN
ENGINEER
HEMATOLOGY TECHNICIAN

HINSDALE (ILL.) SANITARIUM & HOSPITAL

216 BED GENERAL HOSPITAL
EMPLOYING 475 WORKERS

APPROVED INTERNSHIP FOR
MEDICAL DOCTORS
ESTABLISHED 1904

MEDICAL RECORD
MEDICAL STENOGRAPHER
NURSE ANESTHETIST
OCCUPATIONAL THERAPIST
PHARMACIST
PHYSICAL THERAPIST
PRACTICAL NURSE
PSYCHIATRIC NURSE
SECRETARY
STAFF NURSE
TELEPHONE OPERATOR
WARD CLERK
X-RAY TECHNICIAN

THE BATTLE CREEK FOOD CO.



MERRILL PARK
BATTLE CREEK, MICHIGAN

CAROLINA CONFERENCE OF
SEVENTH-DAY ADVENTISTS

P.O. Box 930
1936 EAST SEVENTH STREET

PHONE FR 5-5701

CHARLOTTE 1, NORTH CAROLINA

BEST WISHES

FOR YOUR CONTINUED SUCCESS

INGLEWOOD — MADISON

POLICE AND FIRE DEPARTMENT

CHIEF E.A. SAVELY

JOY'S

FOR FINEST FLOWERS

2223 WEST END AVENUE

229 SIXTH AVENUE, NORTH

NASHVILLE, TENNESSEE

K FURNITURE COMPANY

THE BEST QUALITY
WITH THE LOWEST PRICES

EASY TERMS FOR EVERYONE

UPTOWN MADISON
TW 5-6976

MADISON — OLD HICKORY
INSURANCE AGENCY

INSURANCE
IS OUR BUSINESS—
NOT A SIDELINE

907 GALLATIN ROAD J.A. (JIM) FIGUE
TW 5-6976 J.R. COARSEY

COMPLIMENTS OF
MADISON SQUARE CLINICAL
LABORATORY AND X-RAY
928 GALLATIN ROAD
MADISON, TENNESSEE
COMPLETE LABORATORY AND
X-RAY SERVICES
WALTER H. WILSON, B.S., M.T.
DIRECTOR

THE BEST FOR LESS IN
CLOTHING FOR ALL
B.F. MYERS AND SON
DOWNTOWN MADISON

PHONE TW 5-3142

McCLURE'S STORES, INC.

404 GALLATIN ROAD
MADISON, TENNESSEE

LET US HELP MAKE YOUR HOUSE A HOME

DOWNTOWN MADISON
TW 5-3716 TW 5-3662

COMPLIMENTS OF

PUGH'S PHARMACY

NEXT TO YOUR DOCTOR--
YOUR DRUGGIST

TELEPHONE TW 5-3791
WE CALL FOR AND DELIVER
PRESCRIPTIONS
DOWNTOWN MADISON

**VICK AND FERGUSON
LUMBER COMPANY**

PHONE UN 5-0970

1008 GALLATIN ROAD

MADISON, TENNESSEE

CARSON CONVALESENT HOME

MRS. IDA R. CARSON
NORTH SHORE DRIVE
ROUTE 3, Box 67

BENTON HARBOR, MICHIGAN

DRAPER HOME SUPPLY COMPANY

"EVERYTHING FOR THE HOME"

HARDWARE - SEED FEED - PAINT
PHONE TW 5-3524

MADISON, TENNESSEE

COMPLIMENTS OF

MADISON COLLEGE GARAGE

MADISON INSURANCE AGENCY

GENERAL INSURANCE

SECURITY AT A SAVINGS

MADISON COLLEGE MADISON, TENNESSEE
TELEPHONE TW 5-5461, STA 224

COMPLIMENTS OF

**MADISON COLLEGE SCHOOL OF
SHOE REBUILDING**

MILLER'S FLOWER AND GIFT SHOP

FLOWERS FOR ALL OCCASIONS

PHONE TW 5-6268 NIGHT TW 5-6722

MRS. RHEA MILLER
MEMBER F.T.D.A.

SELLER'S FLORIST

PHONE MADISON TW 5-3379

OLD HICKORY BOULEVARD AND
GALLATIN ROAD

MADISON, TENNESSEE

TEXTILE MILLS STORE

FABRICS FOR ALL OCCASIONS

510 GALLATIN ROAD

MADISON, TENNESSEE

PATRONIZE OUR ADVERTISERS

DIRECTORY

ACKERMAN, NELDA Box 446, MADISON COLLEGE, MADISON, TENNESSEE
ADAMS, JULIA Box 136, MADISON COLLEGE, MADISON, TENNESSEE
ADKINS, PATSY Box 148, MADISON COLLEGE, MADISON, TENNESSEE
ALEXANDER, MALOA 647 SOUTH MAIN, WILLETS, CALIFORNIA
ALLEN, ELAINE ROUTE 2, LAMONT, OKLAHOMA
ALTENBRUN, ISABELLE EGELAND, NORTH DAKOTA
ANAYA, MARGARET 11528 BONITA AVENUE, ARLINGTON, CALIFORNIA
ANDERSON, ARDITH ELLIJAY, GEORGIA
ANDERSON, GEORGE SEDRO WOOLLEY, WASHINGTON
ANDERSON, JOSEPHINE RT. 3, Box 36, TALLOMT RD., OOTTEWAH, TENNESSEE
ANGLADA, JUAN HATA ARRIBA, C.S. SAN SABASTION, PUERTO RICO
ARELLANO, ELSIE EMBUDO, NEW MEXICO
AUGE, DONNA Box 248, MADISON COLLEGE, MADISON, TENNESSEE
BAKER, MARY CALLAWAY, MARYLAND
BALL, CLYDE PORT DEPOSIT, MARYLAND
BANKS, MALISSA ROUTE 1, ELLIJAY, GEORGIA
BAOEC, TONY Box 413, PUUNENE, MAUI, HAWAII
BARKER, GRACE MADISON COLLEGE, MADISON TENNESSEE
BARTON, EDDIE Box 729, BROWNSVILLE, TEXAS
BATES, TOM ROUTE 3, OWENSBORO, KENTUCKY
BEAMAN, ROBERT ROUTE 3, ROGERS, ARKANSAS
BECHTOLD, WAYNE Box 524 LACOMBE, ALBERTA, CANADA
BECK, GERALDINE 21850 HILLSIDE AVENUE, PAGE, NORTH DAKOTA
BECKER, JANE ROUTE 1, FARGO, OKLAHOMA
BEDFORD, HENRY Box 51, MADISON COLLEGE, MADISON, TENNESSEE
BLACKWELDER, MARILYN 5149 DE LONGPRE, HOLLYWOOD, CALIFORNIA
BOLEY, MARY ANN 1101 FORREST ST., GREENVILLE, TENNESSEE
BOLEY, SYLVIA 1101 FORREST ST., GREENVILLE, TENNESSEE
BOTTSFORD, GRACE RIDGETOP, TENNESSEE
BRAMBLE, KAYE Box 116, PERRYVILLE, MARYLAND
BRANNING, CLIFTON ROUTE 2, MERIDIAN, MISSISSIPPI
BRATTON, BOB 1683 KENDALE, MEMPHIS, TENNESSEE
BROOKS, BETTY ROUTE 3, MAPLES, TEXAS
BROWN, JOYCE ROUTE 1, Box 66, TURTLETOWN, TENNESSEE
BROWN, HARRIE 5020 AVE. NORTH 'C.P.', BIRMINGHAM, ALABAMA
BROWN, JANE 713 HOUSE AVENUE, MADISON, TENNESSEE
BROWN, NEWELL 713 HOUSE AVENUE, MADISON, TENNESSEE
BROWN, RAMONA ROUTE 4, Box 168, PORTLAND, TENNESSEE
BRUMMETT, BETTY JO RINGGOLD, GEORGIA
BRUMMETT, THELMA RINGGOLD, GEORGIA
BRYANT, JOHN 3008 CLIFF DRIVE, NASHVILLE, TENNESSEE
BULLOCK, JOHN PORT DEPOSIT, MARYLAND

BULLOCK, LOIS	PORT DEPOSIT, MARYLAND
BUNCH, CORRENE	FARGO, OKLAHOMA
BURCHARD, CAROL	52 ALLINE STREET, ASHVILLE, NORTH CAROLINA
BURKS, ROBERT	2701 DICKERSON ROAD, NASHVILLE, TENNESSEE
BYASSEE, HILDA	CLINTON, KENTUCKY
CABALO, EUFEMIO	BOX 552 CAIA, MAUI, HAWAII
CABANSAG, LILLY	KALIBO, PHILLIPINES
CAMPBELL, PHYLLIS	ROUTE 1, 346 'F' ³ / ₄ THS ROAD, CLIFTON, COLORADO
CAMPBELL, RAYMOND	300 NORTH HAZELWOOD, MARSHALL, TEXAS
CANTRELL, CAROL	FLETCHER ACADEMY, FLETCHER NORTH CAROLINA
CAPPS, PEGGY	ROUTE 3, NAPLES, TEXAS
CARPENTER, HAROLD	MADISON COLLEGE, MADISON, TENNESSEE
CARRIS, EUGENE	2420 SOUTH SHINE STREET, ORLANDO, FLORIDA
CASILLAS, MARGERITA	JAMENEZ TICARDO 54, CAZUAS, PUERTA RICO
CHAPMAN, MARILYN	ROUTE 1, SHERIDAN, ILLINOIS
CHASE, DOROTHY	BOX 91, MADISON COLLEGE, MADISON, TENNESSEE
CLEGG, CHARLES	1008 OLD HICKORY BLVD., MADISON, TENNESSEE
CLOSSER, DARLENE	R.R. 1, BOX 345, ALEXANDRIA, INDIANA
COPPAGE, MARLOW	210 FOREST PARK ROAD, MADISON, TENNESSEE
COUCH, ARNOLD	1152 'B' WEST LAUREL DRIVE, SALINA, CALIFORNIA
CRAWFORD, MARGARET	RT. 1, GOODLETTSVILLE, TENNESSEE
CRISWELL, NANCY	GOOD SAMARITAN HOSPITAL, WOODBURY, TENNESSEE
CRITTENDEN, REBECCA	1101 TRIPPE TERRACE, TULLAHOMA, TENNESSEE
CROWDER, KATE	BOX 164, MADISON COLLEGE, MADISON, TENNESSEE
CRUZEN, ZOE	705 FLORENCE CIRCLE, MADISON, TENNESSEE
CULBERTSON, CHARLIE	BOX 257, MADISON COLLEGE, MADISON, TENNESSEE
CULPEPPER, LILLIAN	BOX 172, MADISON COLLEGE, MADISON, TENNESSEE
DAVIDISON, JUNE	BOX 26, WOODBURY, TENNESSEE
DEVINE, MARTHA	RT. 4, CENTRAL CITY, KENTUCKY
DENT, CHARLES	711 IDLEWILD DRIVE, MADISON, TENNESSEE
DEVLIN, DORRIS	BOX 75, WOODWARD, OKLAHOMA
DOMKE, EUGENE	BOX 287, REVEL STAKE, BRITISH COLUMBIA, CANADA
DRAKE, MAUREEN	BOX 538, SANTA ANNA, TEXAS
DRIVER, BILL	547 CHEROKEE AVENUE, ATLANTA, GEORGIA
DUROCHER, EDITH	ROUTE 2, BOX 392, GOODLETTSVILLE, TENNESSEE
DUSTIN, WILLIAM	11 MECHANIC CENTER, MARBLEHEAD, MASSACHUSETTS
EDWARDS, BETH	BOX 56, MADISON COLLEGE, MADISON, TENNESSEE
EK, WOODROW	MADISON COLLEGE, MADISON, TENNESSEE
EK, LUCILLE	MADISON COLLEGE, MADISON, TENNESSEE
ESPINOZA, ALICIA	P.O. BOX 44, CALEXICO, CALIFORNIA
EVERSOLL, LAVELLE	BOX 211, MADISON COLLEGE, MADISON, TENNESSEE
FAST, ELMER	ROUTE 1, HOMESTEAD, OKLAHOMA
FERGUSON, GLENN	MADISON COLLEGE, MADISON, TENNESSEE
FERRIS, ELAINE	1104 MORELAND AVENUE, OWENSBORO, KENTUCKY
FIELDS, JOE	ROUTE 1, BOX 128, BLOUNTSTOWN, FLORIDA
FIELDS, LORRAINE	ROUTE 1, BOX 128, BLOUNTSTOWN, FLORIDA
FIGUEROA, GEORGE	HOSTAS STREET 2, SAN SABASTIAN, PUERTO RICO

FONTES, ARISTIA	8804 COMMODORE DRIVE, NORFOLK 3, VIRGINIA
FORRESTER, KAY	LITTLE CREEK ACADEMY, CONCORD, TENNESSEE
FORRESTER, NORMA	LITTLE CREEK ACADEMY, CONCORD, TENNESSEE
FOSTER, JOANNE	357 TECUMSEH, CLAUSEN, MICHIGAN
FRANCOMANO, DANIEL	MADISON COLLEGE, MADISON, TENNESSEE
FRANCOMANO, JANE	MADISON COLLEGE, MADISON, TENNESSEE
FRANKLIN, CAROLE	12127 DALEWOOD DRIVE, SILVER SPRINGS, MARYLAND
FUJITA, ALFRED	NAKAMINATO CITY, IBARAKIKEN, JAPAN
FUJITA, HARRY	NAKAMINATO CITY, IBARAKIKEN, JAPAN
FUJITA, SAKAE	NAKAMINATO CITY, IBARAKIKEN, JAPAN
GALLMAN, VIRGINIA	P.O. BOX 221, CLEVELAND, TENNESSEE
GAMBOA, MARTHA	MADISON COLLEGE, MADISON, TENNESSEE
GEORGESON, HARRY	1324 BELLSHIRE DRIVE, NASHVILLE, TENNESSEE
GILL, MARY	ROUTE 2, GENTRY, ARKANSAS
GOLDBERG, EVA	MADISON COLLEGE, MADISON, TENNESSEE
GORDON, IDA	ROUTE 2, BOX 127, MOUNTAIN GROVE, MISSOURI
GRAHAM, BARBARA	ROUTE 1, BOX 353, PELL CITY, ALABAMA
GRAHAM, DOROTHY	BOX 113, ANGWIN, CALIFORNIA
GREBEY, MILDRED	MADISON COLLEGE, MADISON, TENNESSEE
GREENE, NATHAN	MADISON COLLEGE, MADISON, TENNESSEE
GRIFFIN, ERMA JEAN	ROUTE 3, BOX 235, DADE CITY, FLORIDA
GROGG, DAVID	4505 NEW CARLISLE PIKE, SPRINGFIELD, OHIO
GUNDERSON, DAVE	MADISON COLLEGE, MADISON, TENNESSEE
GUNTER, OLIVER	MADISON COLLEGE, MADISON, TENNESSEE
HALL, HARRY	672 ROSITA AVENUE, LOS ALTON, CALIFORNIA
HAM-YING, RUPERT	P.O. BOX 5395, ORLANDO, FLORIDA
HANCOCK, MARJORIE	ROUTE 2, TRUSSVILLE, ALABAMA
HANCOCK, PAT	417 FOREST PARK ROAD, MADISON, TENNESSEE
HANSEN, ROBERT	375 SOUTH CHURCH, WYTHEVILLE, VIRGINIA
HARVEY, RHEA	3703 HOMELAND DRIVE, NASHVILLE, TENNESSEE
HASSENPLUG, JEAN	BOX 152, MADISON COLLEGE, MADISON, TENNESSEE
HAYES, WAYNE	BOX 54, MADISON COLLEGE, MADISON, TENNESSEE
HEER, CAROLYN	2013 - 24TH AVENUE NORTH, NASHVILLE, TENNESSEE
HENDERSON, KENNETH	ROUTE 2, BRISTOL, VIRGINIA
HERNANDEZ, DAVID	SAN SALVADORE, EL SALU, C. A.
HILGERS, CAROL	905 OLD HICKORY BLVD., MADISON, TENNESSEE
HILL, BARBARA	BOX 37, CLEVELAND, TENNESSEE
HILL, PHILIP	ROUTE 3, MURFREESBORO, TENNESSEE
HODGES, THELMA	BANNER ELK, NORTH CAROLINA
HOLDER, CAROLYN	821 POINDEXTER STREET, OWENSBORO, KENTUCKY
HOLLY, LAURA	ROUTE 1, PLAINWELL, MICHIGAN
HOLLY, LORNA	ROUTE 1, PLAINWELL, MICHIGAN
HUDSON, KARYLYN	488 SOUTH JACKSON, LEBANON, MISSOURI
HURT, HELEN	1015 KNEY STREET, MEMPHIS 7, TENNESSEE
ILES, HAROLD	160 SINCLAIR STREET, BEELEVUE, OHIO
ISOM, VIRGINIA	ROUTE 2, BOX 94, CHANDLER, NORTH CAROLINA
JACKSON, EDRIS	UTILA BAY ISLAND, SPANISH HONDURAS, C. A.

JENKINS, EVA	2513 GARDNER LANE, NASHVILLE, TENNESSEE
JENNINGS, RUTH	937 BENJAMIN CONSTANT SANTARIM, PARA ¹ BRAZIL
JIMENEZ, ANGEL	BOX 353, MADISON COLLEGE, MADISON, TENNESSEE
JOHNSON, FRANK	STAR ROUTE, GRANGEVILLE, IDAHO
JOHNSON, MARGARET	5576 GRAND AVENUE, RIVERSIDE, CALIFORNIA
JONES, STEPHEN	207 SOUTH MAIN STREET, COLUMBIA CITY, INDIANA
JUSTICE, BOB	606-3RD STREET, N.W., DECATUR, ALABAMA
KALDAHL, SYLVIA	602 LARKIN SPRINGS ROAD, MADISON, TENNESSEE
KELLER, WILMA	LEWIS, INDIANA
KELLEY, LARRY	3211 LAKESHORE DRIVE, OLD HICKORY, TENNESSEE
KELLY, TERESA	APORTADO '1A', GTMO, OTE, CUBA
KENDALL, ROBERT	HENDERSONVILLE, TENNESSEE
KING, FAYE	ROUTE 4, FRANKLIN, TENNESSEE
KINGRY, DAVID	1218 EAST CROSS STREET, PENSACOLA, FLORIDA
KINKELA, PINO	MADISON COLLEGE, MADISON, TENNESSEE
KOHLER, ROBERT	MADISON COLLEGE, MADISON, TENNESSEE
KOWALSKI, ESTHER	ROUTE 2, PLATTE CITY, MISSOURI
KUBECKA, HELEN	MADISON COLLEGE, MADISON, TENNESSEE
KURTZ, MARLYN	ST. HELENA, CALIFORNIA
LADNER, DELPHIA	R.R. 5, KELOWNA, BRITISH COLUMBIA, CANADA
LAHDE, JUDY	103 WEST LAMBRIGHT, TAMPA, FLORIDA
LANCASTER, JOHN	ALEXANDRIA, VIRGINIA
LANHAM, JUANITA	NICHOLASVILLE, KENTUCKY
LARCOM, JOYCE	BOX 2105, COLLEGEDALE, TENNESSEE
LAZALIER, SALLIE	1106 WEST MARTIN, POPLAR BLUFF, MISSOURI
LEATHERWOOD, BETTY	BOX 182, MADISON COLLEGE, TENNESSEE
LEATHERWOOD, REX	BOX 182 MADISON COLLEGE, TENNESSEE
LEE, SUN HIE	777 SANITARIUM ROAD, MADISON, TENNESSEE
LEITSINGER, HELEN	GRUETLI, TENNESSEE
LEMACKS, MARGARET	148 CLOTILDE AVENUE, FORT MYERS, FLORIDA
LIMON, AIDA	ROUTE 1, BOX 280, RIO HONDO, TEXAS
LIMON, RAMONA	ROUTE 1, BOX 280, RIO HONDO, TEXAS
LIMA, DANIEL	SERRA DO VENTO, TACAIMBO, PERNAUN BUDO, BRAZIL
LINDSAY, VANGOETHE	605 YOUNG'S LANE, NASHVILLE, TENNESSEE
LINSCOTT, GRACE	STAR ROUTE, MONTAGUE, MASSACHUSETTS
LOFTON, MARJORIE	BOX 153, LYFORD, TEXAS
LONG, LORAYE	RFD 2, BOX 246-A, ST. AUGUSTINE, FLORIDA
LOUSIALE, DAVID	2120 KALALA STREET, HONOLULU, HAWAII
LOWRY, PRESTLEY	ROUTE 1, BOX 113, PEMBROKE, NORTH CAROLINA
MARSH, MARILYN	CEDAR AVENUE, SOUTH PITTSBURG, TENNESSEE
MARTIN, LOUIS	2015 24TH AVENUE, NORTH, NASHVILLE, TENNESSEE
MARTZ, RITA	907 MARILYN ROAD, NASHVILLE, TENNESSEE
MAXWELL, DOROTHY	ROUTE 1, GENTRY, ARKANSAS
MAXWELL, LOUISE	MADISON COLLEGE, MADISON TENNESSEE
MELLENDEZ, MELBA	AVE COMPENTER ROAD 142, HATO REZ, PUERTO RICO
MENDENHALL, PAT	112 WEST 20TH STREET, WEWAKA, OKLAHOMA
MENDOZA, WOODROW	PINEVILLE, LOUISIANA

MERCADO, JUANITA	PALMER, PUERTO RICO
MERRIFIELD, JAMES	306 MURRAY AVENUE, FAIRMONT, WEST VIRGINIA
MILLIMAN, NEVA	PERRYSBURG, NEW YORK
MITZELFELT, RICHARD	MADISON COLLEGE, MADISON, TENNESSEE
MOON, ALLAN	NELLEYS BEND ROAD, MADISON, TENNESSEE
MOORE, KETTETH	1133 CHERRY STREET, KINGSFORT, TENNESSEE
MOORE, MYRA	233 RANDY ROAD, MADISON, TENNESSEE
MOOSA, ADIL	BAGHDAD, IRAQ
MORALES, RICARDO	SAN SEBASTIAN, PUERTO RICO
MUTH, DAVID	MONUMENT VALLEY MISSION, BOX 100, MEXICAN HAT, UTAH
MYERS, AUDREY	1032 NELLEYS BEND ROAD, MADISON, TENNESSEE
MYRICK, NADINE	401 MONROE STREET, ROANAKE RAPIDS, NORTH CAROLINA
MACMILLAN, CHARLES B.	20 SEACREST DRIVE, ORMOND BEACH, FLORIDA
MCCLELLAN, RUTH	BOX 58, DELCO, NORTH CAROLINA
MCCOLPIN, MARVIN	616 LARKIN SPRINGS RD., MADISON, TENNESSEE
NETTLAND, PAUL	MADISON COLLEGE, MADISON, TENNESSEE
NORRIS, MARTHA ANN	ROUTE 12, BOX 784 BIRMINGHAM, ALABAMA
OCAMPO, GLADYS	12 AVENUE 'B' 6-12 ZONA 2, GUATEMALA
OKADO, KEIKO	AKASHIBA KASHIWAGWA MIYAGI, MURA
OLIVENCIA, CARMEN	BOX 761 SAN SEBASTIAN, PUERTO RICO
OWNES, GENEVA	SEXTONS' CREEK, KENTUCKY
PARRALES, RUTH	APDO. 92 MANAGNA, NICARAGUA
PAUL, WESLEY	ROUTE 5, KELOWA, B.C. CANADA
PEARALES, ESTHER	1512 NEVEA ST. STOP 22, SANTURES, PUERTO RICO
PICKEL, BARBARA	2345 GRIFFIETH, LINCOLN, NEBRASKA
PINEIRO, EFRAIN	CAMAGUEY, CUBA
PIRES, CHARLES	11 BUTLER AVENUE E., TAUNTON, MASSACHUSETTS
PORTALATIN, ELENA	BOX 118 BO. ANGELES, PUERTO RICO
POST, EUGENE	3604 DREXEL AVENUE, SAN ANTONIO, TEXAS
POWELL, JANET	ROUTE 1, BOX 681, HALIFAX, VIRGINIA
QUARNSTROM, JANICE	MADISON COLLEGE, MADISON, TENNESSEE
RANDALL, DENNIS	1725 SIMPKIN STREET, NASHVILLE, TENNESSEE
RAVENELL, REBECCA	800 YOUNG'S LANE, NASHVILLE, TENNESSEE
RICKS, PAT	533 BELMONT DRIVE, BOWLING GREEN, KENTUCKY
RING, LILA	2 BASSICK COURT, STRATFORD, CONNECTICUT
RIVERA, DAMARIS	BOX 2 ST. JUST, PUERTO RICO
RIVERA, VICTOR	BUESA, NOVALICHES, PHILIPPINES
ROACH, GEORGE	MADISON COLLEGE, MADISON, TENNESSEE
ROACH, LINDA	MADISON COLLEGE MADISON, TENNESSEE
ROBERTS, GORDON	BOX 45, MADISON COLLEGE, MADISON, TENNESSEE
ROBERTS, MARGUERITE	3304 GALLATIN ROAD, NASHVILLE, TENNESSEE
ROBINSON, VELMA	ROUTE 2, BOX 477, CRESTWOOD, KENTUCKY
RODRIGUEZ, AYLER	APARTADO A, GUAUTAIMO, CUBA
RODRIGUEZ, ELIZABETH	BOX 442, ENSENADN, PUERTO RICO
RODRIGUEZ, JOSE	GUANTANAMO, CUBA
RODRIGUEZ, RENE	APARTADO 'A' GTMO, ORIENTA, CUBA
ROJAS, ALEXANDER	BOX 4896, LIMA, PERU, SOUTH AMERICA

ROLLINS, GLAYDS	ROUTE 1, BOX 5, LA GRANDE, OREGON
ROMO, PAULINE	1745 HACKETT AVENUE, MOUNTAIN VIEW, CALIFORNIA
ROSENTHAL, PAT	BOX 86, MADISON COLLEGE MADISON, TENNESSEE
RUSHING, MARVIS	ROUTE 2, HALEYVILLE, ALABAMA
SANDBORN, MARIE	MADISON COLLEGE, MADISON, TENNESSEE
SANDBORN, WILLIAM	MADISON COLLEGE, MADISON, TENNESSEE
SANDERS, PAULINE	4663 SIERRA STREET, RIVERSIDE, CALIFORNIA
SANFORD, PHIL	1929 NORTH JOHNSON STREET, SOUTH BEND, INDIANA
SAUCECLO, ABIMELEC	APARTAD 16, MONTEMORELES, MEXICO
SCHMALE, RONALD	BOX 52, MADISON COLLEGE, TENNESSEE
SCHMIDT, MARVIN	ROUTE 2, TERRINGTON, WYOMING
SCHMUKLER, TANIA	MADISON COLLEGE, MADISON, TENNESSEE
SCOGGINS, THOMAS H.	BOX 51, ODENVILLE, ALABAMA
SCOTT, ESTHER	BOX 355, MADISON COLLEGE, MADISON, TENNESSEE
SCOTT, PAT	BOX 583, LA FERIA, TEXAS
SEAMANS, CLETIS	ROUTE 2, CHAPTMAN, KANSAS
SECRIST, DARWIN	ROUTE 3, BOX 135, WOODWARD, OKLAHOMA
SELLARS, GENE	ROUTE 1, BOX 37, PANAMA CITY, FLORIDA
SELLARS, JUDY	1535 CLAIR, MEL CITY, TAMPA, FLORIDA
SHEFFIELD, ALICE	GROVELAND ACADEMY, GROVELAND, FLORIDA
SHEFFIELD, PATRICIA	1781 KILLARNEY DRIVE, WINTER PARK, FLORIDA
SHRADER, ANN	1727 CONARD ROAD, LANCASTER, PENNSYLVANIA
SILVA, SARA	BOX 2666 LIMA, PERU, S.A.
SILVA, WALTER	BOX 2666 LIMA, PERU, S.A.
SILVER, PATRICIA	BOX 253, MADISON COLLEGE, MADISON, TENNESSEE
SILVERS, MARY	609 MARTHANNA ROAD, MADISON, TENNESSEE
SIMONS, ANNA BELLE	RIVERSIDE SANITARUIM AND HOSPITAL, NASHVILLE, TENNESSEE
SLATER, THELMA	MADISON COLLEGE, MADISON, TENNESSEE
SLATERY, LAURA MAE	MADISON COLLEGE, MADISON, TENNESSEE
SMITH, CAROL	ROUTE 2, TEKONSHA, MICHIGAN
SMOTHERMON, ED	MADISON COLLEGE, MADISON, TENNESSEE
SOSONG, JUANITA	MADISON COLLEGE, MADISON, TENNESSEE
SOSSONG, VERLE	MADISON COLLEGE, MADISON, TENNESSEE
SOWELL, KENNETH	P.O. BOX 42, MADISON, COLLEGE, MADISON, TENNESSEE
STECK, ROY	115-18 WESTWOOD DRIVE, ARLINGTON, CALIFORNIA
STEEN, PAUL	MADISON COLLEGE, MADISON, TENNESSEE
STINNETT, OLLIO	ROUTE 4, PORTLAND, TENNESSEE
SULLINS, MARY LOU	FLORENCE CIRCLE, MADISON COLLEGE, MADISON, TENNESSEE
SULLIVAN, GEORGE	BOX 214, MADISON COLLEGE, MADISON, TENNESSEE
SULLIVAN, STELLA	BOX 214, MADISON COLLEGE, MADISON, TENNESSEE
SURDAHL, ALICE	BOZEMAN HOT SPRINGS, MONTANA
SUTTON, PAT	MADISON COLLEGE, MADISON, TENNESSEE
SUTTON RICHARD	MADISON COLLEGE, MADISON, TENNESSEE
SWAIN, JOHN M.	DALTON, GEORGIA
SWEENY, TERRY	15763 HAMILTON STREET, GRANGER, INDIANA
SYVERTSON, JEAN	2215 GRAND AVENUE SOUTH, MINNEAPOLIS, MINNESOTA
TATE, MARGARET	617 LARKIN SPRINGS ROAD, MADISON, TENNESSEE

TAYLOR, CAROL	PINE FORES ACADEMY, CHUNKY, MISSISSIPPI
TAYLOR, ETHELYN	MADISON COLLEGE, MADISON, TENNESSEE
THEOBALD, FAYE	110 SHIELDS STREET, CINCINNATI 20, OHIO
THOMAS, EVELYN	Box 326 MADISON COLLEGE, MADISON, TENNESSEE
THOMAS, HALLIE	Box 326, MADISON COLLEGE, MADISON, TENNESSEE
TORRES, CARLOTA	CONSULADO DE GUATEMAUA, SAN PEDRO SULA, HONDURAS
TREMPER, CHARLES	COALMONT, TENNESSEE
TREMPER, HELEN	COALMONT, TENNESSEE
TREU, JOHN	R.D. 1, HIGHWAY 1, MONMOUTH JUNCTION, NEW JERSEY
TRIVETT, LLOYD	Box 491, PORT OXFORD, OREGON
TRIVETT, TERRY	ROUTE 4, PORTLAND, TENNESSEE
TWOMBLY, CLARENCE	GEN. DEL. MADISON COLLEGE, MADISON, TENNESSEE
UMALI, NORMA	P.O. Box 813, MANILA, PHILIPPINES
VELAZQUEZ, FRANCISCO	Box 164, MOCA, PUERTO RICO
VESTAL, SUE	2512 SUNSET PLACE, NASHVILLE, TENNESSEE
VILLENEUVE, JOHN	Box 400, OSHAWA, ONTARIO, CANADA
WALDEN, ROSE,	2409 LANCELOT AVENUE, RICHMOND, VIRGINIA
WALLACE, SARA JO	ROUTE 2, N. LEE HIGHWAY, CLEVELAND, TENNESSEE
WALPER, LOIS	MADISON COLLEGE, MADISON, TENNESSEE
WALTERS, MARTHA	MADISON COLLEGE, MADISON, TENNESSEE
WALTERS, THERESA	Box 344, MADISON COLLEGE, MADISON, TENNESSEE
WARD, MARY LOU	179 NORTH LAUREL STREET, MALVERN, ARKANSAS
WEAVER, LANNY	Box 275, KEENE, TEXAS
WEDEL, CHARLOTTE	MADISON, COLLEGE, MADISON, TENNESSEE
WEDEL, JOSEPH	MADISON COLLEGE, MADISON, TENNESSEE
WERNER, RONALD	Box 321, MADISON COLLEGE, MADISON, TENNESSEE
WHEELER, GENE	1821 BROADVIEW PL., FT. COLLINS, COLORADO
WHITE, BILLY	MADISON COLLEGE, MADISON, TENNESSEE
WHITE, JIMMIE	MADISON COLLEGE, MADISON, TENNESSEE
WHITLOW, RUTH	Box 105, MADISON COLLEGE, MADISON, TENNESSEE
WILLIAMS, ELIZABETH	3602 GOLF STREET, NASHVILLE, TENNESSEE
WILLIAMS, JERRY	3602 GOLF STREET, NASHVILLE, TENNESSEE
WILLIAMS, JULIUS	ROUTE 1, GADSEN, TENNESSEE
WILLIAMS, TONY	Box 103, MADISON COLLEGE MADISON, TENNESSEE
WILSON, DORRIS	MADISON COLLEGE, MADISON, TENNESSEE
WILSON, MAXINE	ROUTE 2, NEW WINDSOR, MARYLAND
WINTON, CAROL	ROUTE 1, SOVERVILLE, ALABAMA
WISNER, MARY	MADISON COLLEGE, MADISON, TENNESSEE
WOODRUFF, MARGARET	ROUTE 2, GENTRY ARKANSAS
WYNN, ADRIAN	5 HENDERSONVILLE, NORTH CAROLINA
YATANI, RACHEL,	464 OARAI, MACHI IBARAKI, PREF. JAPAN
YOSHIMURA, KEIKO	1-2138 EGOTA NAKANO, TOKYO, JAPAN
YOUNG, MARY ELLEN	ROUTE 1, HAGERSTOWN, MARYLAND
YOUNG, SANDRA	ROUTE 2, Box 96, CANDLER, NORTH CAROLINA
Yu, RAYMOND	26 NORTH CHIEN KUO RD. TOIPIE, TAIWAN
ZAFT, LYDIA	250 MANOR CIRCLE, TAKOMA PARK, MARYLAND
ZINKIE, SHIRLEY	1117 6TH AVENUE, S.E., JAMESTOWN, NORTH DAKOTA



it's the end



The Andrews University Center for Adventist Research is happy to make this item available for your private scholarly use. We trust this will help to deepen your understanding of the topic.

Warning Concerning Copyright Restrictions

This document may be protected by one or more United States or other nation's copyright laws. The copyright law of the United States allows, under certain conditions, for libraries and archives to furnish a photocopy or other reproduction to scholars for their private use. One of these specified conditions is that the photocopy or reproduction is not to be used for any purpose other than private study, scholarship, or research. This document's presence in digital format does not mean you have permission to publish, duplicate, or circulate it in any additional way. Any further use, beyond your own private scholarly use, is your responsibility, and must be in conformity to applicable laws. If you wish to reproduce or publish this document you will need to determine the copyright holder (usually the author or publisher, if any) and seek authorization from them. The Center for Adventist Research provides this document for your private scholarly use only.

The Center for Adventist Research

James White Library
Andrews University
4190 Administration Drive
Berrien Springs, MI 49104-1440 USA
+001 269 471 3209
www.andrews.edu/library/car
car@andrews.edu

Disclaimer on Physical Condition

By their very nature many older books and other text materials may not reproduce well for any number of reasons. These may include

- the binding being too tight thus impacting how well the text in the center of the page may be read,
- the text may not be totally straight,
- the printing may not be as sharp and crisp as we are used to today,
- the margins of pages may be less consistent and smaller than typical today.

This book or other text material may be subject to these or other limitations. We are sorry if the digitized result is less than excellent. We are doing the best we can, and trust you will still be able to read the text enough to aid your research. Note that the digitized items are rendered in black and white to reduce the file size. If you would like to see the full color/grayscale images, please contact the Center.

Disclaimer on Document Items

The views expressed in any term paper(s) in this file may or may not accurately use sources or contain sound scholarship. Furthermore, the views may or may not reflect the matured view of the author(s).